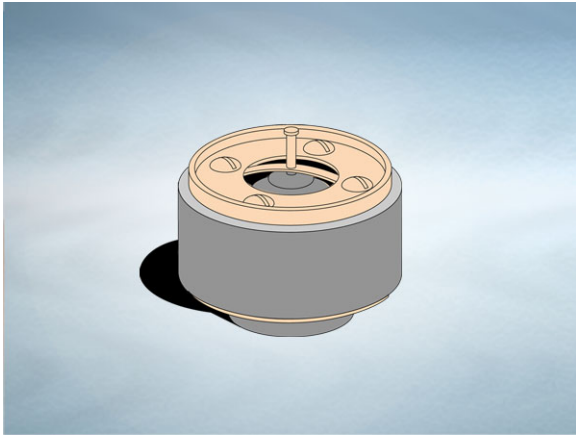


Product Details

U703 Backwater Valve

Technical Data



Dimensions:

75 dia. overall size

52 - Overall Height

Materials - Brass, natural rubber

Weight - 0.2 kg

General Description:

Vari-Level Backwater Valve (For use with 3" throat vari-level/direct connection gratings and access covers.). For installation where protection from backflow is required.

All dimensions are in millimetres unless stated. In line with general practice all dimensions shown are nominal.

Wade International

Third Avenue, Halstead, Essex, CO9 2SX.

Telephone: +44 (0)1787 475151

Fax: +44 (0)1787 475579

e-mail: wadetech@alumascwms.co.uk

website: <https://www.alumascwms.co.uk/brands/wade/>