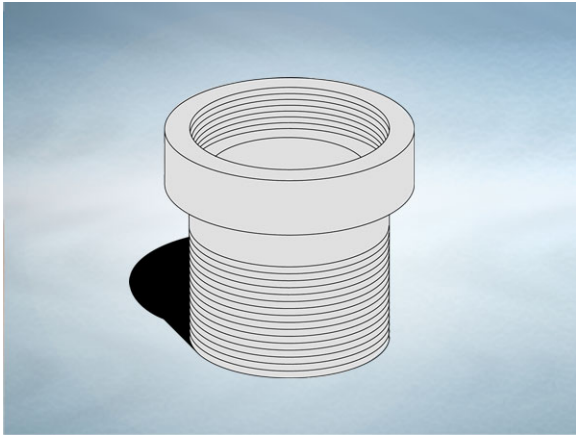


Product Details

U201 Extension

Technical Data



Dimensions:

130 dia. overall size
115 - Overall Height
40 to 110 - min/max height increase

Connection - 3" NPSM Vari-Level thread

Materials - Cast iron, lacquered

Weight - 1.5 kg

General Description:

Cast Iron Vari-Level Extension (Extension has 4" NPSM inlet and 3" NPSM outlet, enabling 4" NPSM gratings / covers to be used with a body having a 3" NPSM inlet.), with 3" NPSM dia. outlet. Used to increase the height between the top of a body and finished floor level.

Materials:

Cast Iron - BS EN 1561: Used for bodies, membrane clamping collars, spigot adaptors and accessories such as extensions. A widely used metal in the drainage industry, its resistance to corrosion permits extended use under extreme conditions. Castings are coated with a high grade lacquer paint to provide internal and external surface coverage. Paint will gradually wear off and is replaceable; oxidation (surface rusting) is a natural process which does not weaken the material. A zinc anti-corrosion coating is applied to certain castings by sherardizing.

All dimensions are in millimetres unless stated. In line with general practice all dimensions shown are nominal.

Wade International

Third Avenue, Halstead, Essex, CO9 2SX.

Telephone: +44 (0)1787 475151

Fax: +44 (0)1787 475579

e-mail: wadetech@alumascwms.co.uk

website: <https://www.alumascwms.co.uk/brands/wade/>

Typical Installation for U201:

Note: This illustration may show a similar Wade Product - it is intended to show the general installation type only.

