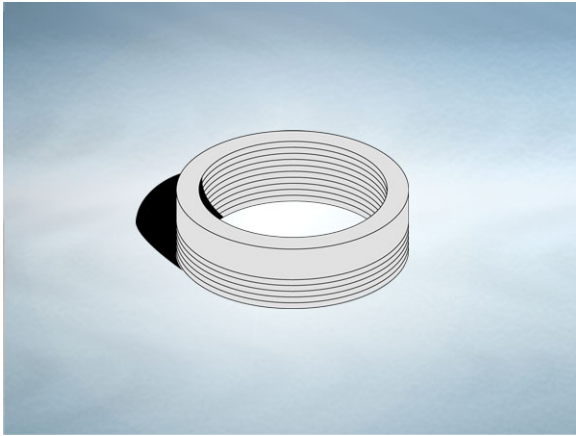


**Product Details**

**U1101 Extension / Reducing Bush**

**Technical Data**



**Dimensions:**

130 dia. overall size  
32 - Overall Height  
15 to 27 - min/max height increase

**Connection** - 4" NPSM Vari-Level thread

**Materials** - Cast iron, lacquered

**Weight** - 0.9 kg

**General Description:**

Cast Iron Vari-Level Extension / Reducing Bush, with 4" NPSM dia. vertical outlet. Reducing bush to enable 3" throat gratings / covers to be used in Vari-Level bodies / adaptors with 4" inlet. Note: Height of grating / cover will be increased by 15mm min./ 27mm max.

**Materials:**

**Cast Iron - BS EN 1561:** Used for bodies, membrane clamping collars, spigot adaptors and accessories such as extensions. A widely used metal in the drainage industry, its resistance to corrosion permits extended use under extreme conditions. Castings are coated with a high grade lacquer paint to provide internal and external surface coverage. Paint will gradually wear off and is replaceable; oxidation (surface rusting) is a natural process which does not weaken the material. A zinc anti-corrosion coating is applied to certain castings by sherardizing.

All dimensions are in millimetres unless stated. In line with general practice all dimensions shown are nominal.

Wade International

Third Avenue, Halstead, Essex, CO9 2SX.

Telephone: +44 (0)1787 475151

Fax: +44 (0)1787 475579

e-mail: [wadetech@alumascwms.co.uk](mailto:wadetech@alumascwms.co.uk)

website: <https://www.alumascwms.co.uk/brands/wade/>

**Typical Installation for U1101:**

Note: This illustration may show a similar Wade Product - it is intended to show the general installation type only.

