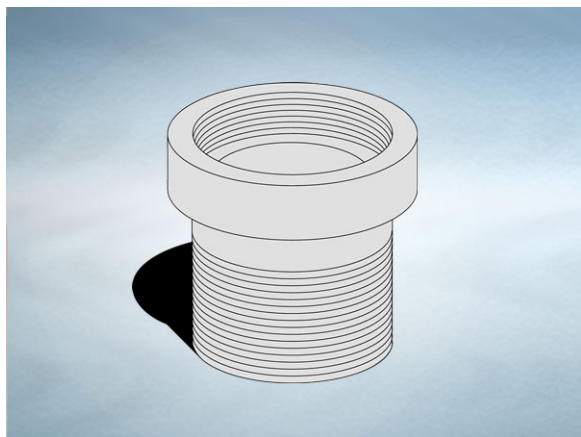


## Product Details

### U101 Extension

### Technical Data

**Dimensions:**

100 dia. overall size

127 - Overall Height

42 to 120 - min/max height increase

**Connection** - 3" NPSM Vari-Level thread

**Materials** - Cast iron, lacquered

**Weight** - 1.6 kg

**General Description:**

Cast Iron Vari-Level Extension, with 3" NPSM dia. outlet. Used to increase the height between the top of a body and finished floor level. Extensions may be stacked to obtain extra height, but access to trap/plug will be restricted when used with G/GC/GD/GP series trapped bodies

**Materials:**

**Cast Iron - BS EN 1561:** Used for bodies, membrane clamping collars, spigot adaptors and accessories such as extensions. A widely used metal in the drainage industry, its resistance to corrosion permits extended use under extreme conditions. Castings are coated with a high grade lacquer paint to provide internal and external surface coverage. Paint will gradually wear off and is replaceable; oxidation (surface rusting) is a natural process which does not weaken the material. A zinc anti-corrosion coating is applied to certain castings by sherardizing.

---

All dimensions are in millimetres unless stated. In line with general practice all dimensions shown are nominal.

Wade International

Third Avenue, Halstead, Essex, CO9 2SX.

Telephone: +44 (0)1787 475151

Fax: +44 (0)1787 475579

e-mail: [wadetech@alumascwms.co.uk](mailto:wadetech@alumascwms.co.uk)

website: <https://www.alumascwms.co.uk/brands/wade/>

**Typical Installation for U101:**

Note: This illustration may show a similar Wade Product - it is intended to show the general installation type only.

