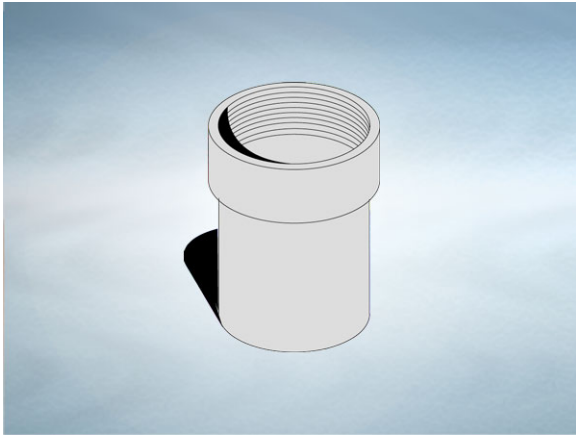


**Product Details**

**T801 Grating / Cover to Pipework Adaptor**

**Technical Data**



**Dimensions:**

106 dia. overall size

127 - Length

**Connection** - 3" BS416 (75mm) / Harmer SML

**Materials** - Cast iron, lacquered

**Weight** - 1.9 kg

**General Description:**

Cast Iron T series Vari-Level Grating / Cover to Pipework Adaptor. Vari-Level gratings and covers, when used without a body, may be connected to pipework by means of a cast iron adaptor.

**Materials:**

**Cast Iron - BS EN 1561:** Used for bodies, membrane clamping collars, spigot adaptors and accessories such as extensions. A widely used metal in the drainage industry, its resistance to corrosion permits extended use under extreme conditions. Castings are coated with a high grade lacquer paint to provide internal and external surface coverage. Paint will gradually wear off and is replaceable; oxidisation (surface rusting) is a natural process which does not weaken the material. A zinc anti-corrosion coating is applied to certain castings by sherardizing.

---

All dimensions are in millimetres unless stated. In line with general practice all dimensions shown are nominal.

Wade International

Third Avenue, Halstead, Essex, CO9 2SX.

Telephone: +44 (0)1787 475151

Fax: +44 (0)1787 475579

e-mail: [wadetech@alumascwms.co.uk](mailto:wadetech@alumascwms.co.uk)

website: <https://www.alumascwms.co.uk/brands/wade/>

**Typical Installation for T801:**

Note: This illustration may show a similar Wade Product - it is intended to show the general installation type only.

