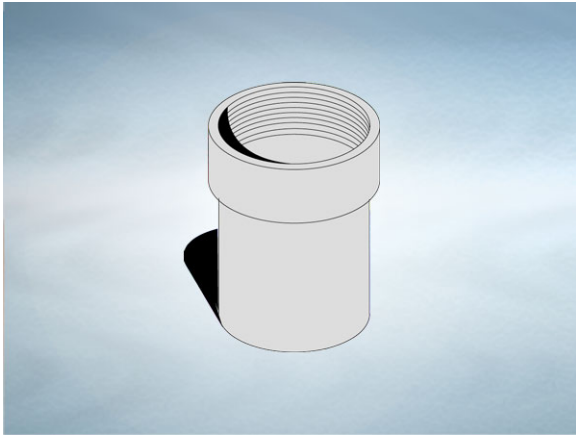


Product Details

T712 Grating / Cover to Pipework Adaptor

Technical Data



Dimensions:

130 dia. overall size

115 - Length

Connection - 110mm Plastic, 100mm DIN19522 / 4" BS416 /
Harmer SML

Materials - Cast iron, lacquered

Weight - 2.5 kg

General Description:

Cast Iron T series Vari-Level Grating / Cover to Pipework Adaptor. Vari-Level gratings and covers, when used without a body, may be connected to pipework by means of a cast iron adaptor.

Materials:

Cast Iron - BS EN 1561: Used for bodies, membrane clamping collars, spigot adaptors and accessories such as extensions. A widely used metal in the drainage industry, its resistance to corrosion permits extended use under extreme conditions. Castings are coated with a high grade lacquer paint to provide internal and external surface coverage. Paint will gradually wear off and is replaceable; oxidation (surface rusting) is a natural process which does not weaken the material. A zinc anti-corrosion coating is applied to certain castings by sherardizing.

All dimensions are in millimetres unless stated. In line with general practice all dimensions shown are nominal.

Wade International

Third Avenue, Halstead, Essex, CO9 2SX.

Telephone: +44 (0)1787 475151

Fax: +44 (0)1787 475579

e-mail: wadetech@alumascwms.co.uk

website: <https://www.alumascwms.co.uk/brands/wade/>

Typical Installation for T712:

Note: This illustration may show a similar Wade Product - it is intended to show the general installation type only.

