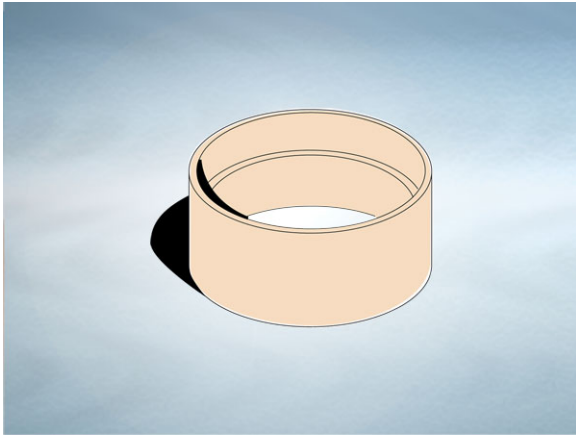


**Product Details**

**T1203 Adaptor**

**Technical Data**



**Dimensions:**

114 dia. overall size

52 - Length

**Connection** - 100mm copper pipework (4")

**Materials** - Cast gunmetal

**Weight** - 0.7 kg

**General Description:**

Gunmetal T series Pipework Adaptor. Copper to BS 416. Adaptor must be brazed / soldered to copper before connecting to BS416.

**Materials:**

**Gunmetal - BS EN 1982:** Used for downspout nozzles, gratings, gunmetal gullies and non-freeze water points. A cast alloy suited to finished areas where the rich, bronze colour complements the decor. Being a non-spark material makes it particularly suited to gunmetal gullies for use in metal decks such as on oil rigs or ships. On certain products, a "mirror" finish is produced by polishing. If left alone polished bronze will gradually tarnish; to restore lustre, use metal polish and buff with a cloth. The mirror finish must not be treated with any abrasive cleaning material otherwise the surface will be permanently scratched. On other products, a satin finish with a fine grain effect is used which blends well with most floor finishes. The satin finish is generally maintained by the slight abrasive action of passing traffic. In unused areas the material will gradually tarnish. To restore lustre, apply a plain nylon scouring pad (not soap-filled) in the direction of grain.

All dimensions are in millimetres unless stated. In line with general practice all dimensions shown are nominal.

Wade International

Third Avenue, Halstead, Essex, CO9 2SX.

Telephone: +44 (0)1787 475151

Fax: +44 (0)1787 475579

e-mail: [wadetech@alumascwms.co.uk](mailto:wadetech@alumascwms.co.uk)

website: <https://www.alumascwms.co.uk/brands/wade/>