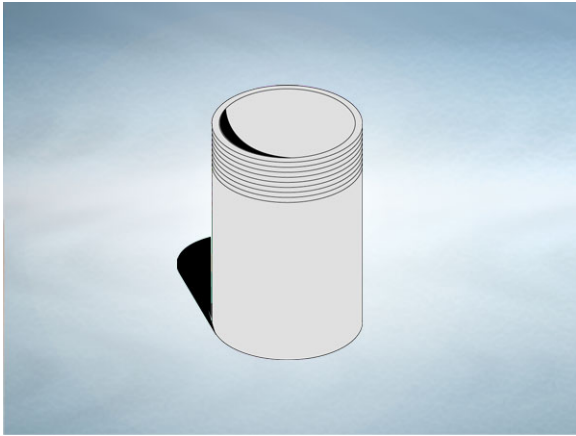


Product Details

T108 Adaptor

Technical Data



Dimensions:

84 dia. overall size

90 - Length

Connection - 82mm Plastic, 75mm DIN19522 / Harmer SML

Materials - Mild steel, sherardized

Weight - 0.6 kg

General Description:

Mild Steel T series Threaded Pipework Adaptor, with 3" BSP inlet and 82.5 dia. outlet. Spigot adaptor, enables gullies with BSP threaded outlet to be connected to pipework. Longer spigots can be made in 10mm increments up to 900mm. To specify/order add suffix "-" and length (mm).

All dimensions are in millimetres unless stated. In line with general practice all dimensions shown are nominal.

Wade International

Third Avenue, Halstead, Essex, CO9 2SX.

Telephone: +44 (0)1787 475151

Fax: +44 (0)1787 475579

e-mail: wadetech@alumascwms.co.uk

website: <https://www.alumascwms.co.uk/brands/wade/>

Dimensioned Section for T108:

