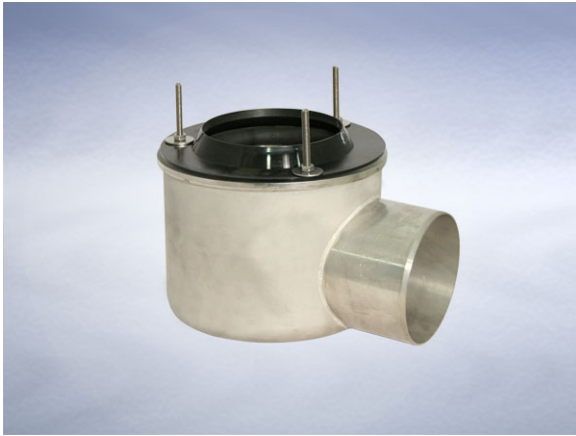


Product Details

QB214LD Non-Trapped Body

Technical Data



Dimensions:

192 dia. body
138 - Overall Height
82 - depth body flange to outlet center line

Connection - 110mm Plastic, 100mm DIN19522 / 4" BS416 / Harmer SML

Free Area - 78cm²

Materials - Stainless steel

Weight - 2.1 kg

General Description:

Stainless Steel QB series Non-Trapped Body (Version for use with Wade stainless steel drainage channels. Shallow Sump), with 110.2 dia. horizontal outlet. Body inlet is machined to accept a standard 114 diameter channel outlet spigot and is supplied with membrane clamping collar and a neoprene o-ring to give a watertight joint.

Options:

To specify an option, add option letter(s) as a suffix to the Spec. Code

M - grade 316 stainless steel

W - weepholes (provide supplementary drainage at membrane level)

Materials:

Stainless Steel - Austenitic Grade 304 (Grade 316 optional on most products): Used for bodies, gratings, funnels, access covers, filter buckets and fixings. A corrosion-resistant metal containing significant amounts of nickel and chromium; AISI grade 304 stainless steel is used as standard, which is suitable for general use in and around buildings including most coastal locations. In applications such as swimming pools or having an aggressive atmosphere, grade 316 is recommended and is available optionally (if available, code 'M' will be listed under 'Options'). An even higher grade may be required for applications in highly corrosive environments including where exposure to seawater may be anticipated. Clean with soap and warm water rinse and wipe dry. Gratings may also be cleaned in certain dishwashers. Under no circumstances treat with metal scouring pads, metal scrapers or wire wool as these will contaminate surfaces leaving rust spots. Take care to cover stainless steel items when site work is going on, to avoid contamination with rust-inducing particles such as when mild steel or cast iron items are being cut.

All dimensions are in millimetres unless stated. In line with general practice all dimensions shown are nominal.

Wade International

Third Avenue, Halstead, Essex, CO9 2SX.

Telephone: +44 (0)1787 475151

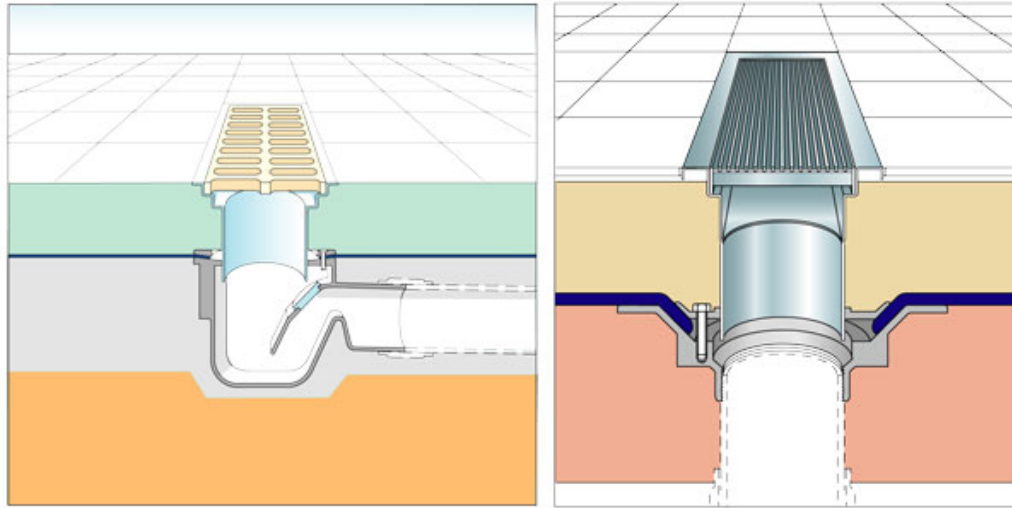
Fax: +44 (0)1787 475579

e-mail: wadetech@alumascwms.co.uk

website: <https://www.alumascwms.co.uk/brands/wade/>

Typical Installation for QB214LD:

Note: This illustration may show a similar Wade Product - it is intended to show the general installation type only.



With 'P' trapped body.

With non-trapped body.

Dimensioned Section for QB214LD:

