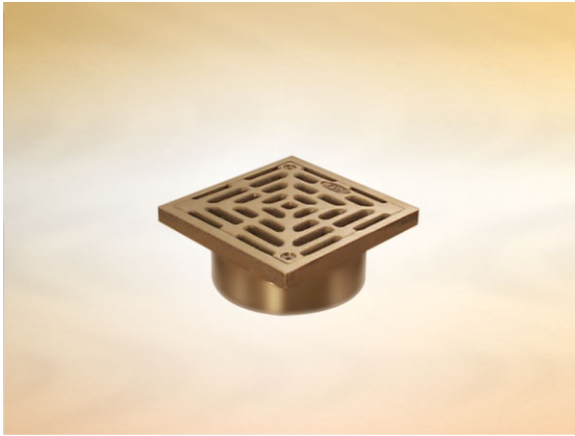


**Product Details**

**L2141 Grating**

**Technical Data**



**Dimensions:**

101 square at finish level

45 - Overall Height

**Connection** - 82mm Plastic, 75mm DIN19522 / Harmer SML

**Free Area** - 30cm<sup>2</sup>

**Materials** - Nickel bronze

**Load Rating Class** - K3

**Weight** - 0.9 kg

**General Description:**

101 Square Nickel Bronze Direct Connection Grating, for use with tiles, marble, terrazzo, resin etc. flooring (Standard square grating), with 82.5 dia. vertical outlet. Durable, superbly finished items particularly suited to a high volume of pedestrian traffic.

**Options:**

To specify an option, add option letter(s) as a suffix to the Spec. Code

H - fitted with Pin Torx screws for security applications

**Materials:**

**Nickel Bronze - BS EN 1982:** Used with satin finish for gratings, funnels and access covers. A cast alloy with a fine grain effect which blends well with most floor finishes. The satin finish is generally maintained by the slight abrasive action of passing traffic. In unused areas the material will gradually tarnish. To restore lustre, apply a plain nylon scouring pad (not soap-filled) in the direction of grain. **Note: Avoid covering nickel bronze items with plastic sheeting after installation, otherwise blackening may occur.**

---

All dimensions are in millimetres unless stated. In line with general practice all dimensions shown are nominal.

Wade International

Third Avenue, Halstead, Essex, CO9 2SX.

Telephone: +44 (0)1787 475151

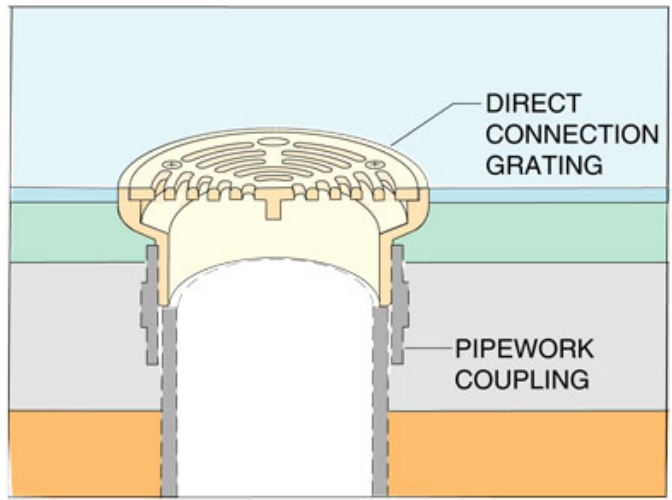
Fax: +44 (0)1787 475579

e-mail: [wadetech@alumascwms.co.uk](mailto:wadetech@alumascwms.co.uk)

website: <https://www.alumascwms.co.uk/brands/wade/>

**Typical Installation for L2141:**

Note: This illustration may show a similar Wade Product - it is intended to show the general installation type only.



**Dimensioned Section for L2141:**

