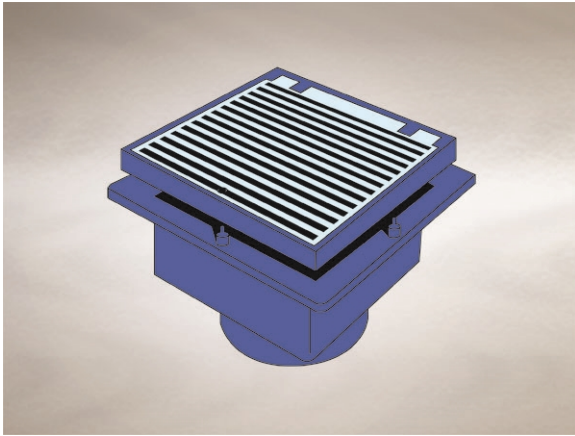


Product Details

F216 Non-Trapped Gully Assembly

Technical Data



Dimensions:

325 x 318 at finish level
396 square body
232 - Height below Body Flange
106 to 70 - min/max height between top of grating and body flange

Connection - female 6" BSP threaded connection (150mm)

Free Area - 176cm²

Materials - Body - cast iron, lacquered; Grating - stainless steel

Load Rating Class - P400

Weight - 53.5 kg

General Description:

325 x 318 Stainless Steel F series Multi-Level Non-Trapped Gully Assembly, for use with unfinished (eg. bare concrete) or paved areas, with 6" BSP dia. vertical outlet. F Series Multi-Level gullies with hinged grating are suited for use in warehouses, plant rooms, yards, car parks etc.

Options:

C.F2 - membrane clamping collar (order as separate code)

Materials:

Cast Iron - BS EN 1561: Used for bodies, membrane clamping collars, spigot adaptors and accessories such as extensions. A widely used metal in the drainage industry, its resistance to corrosion permits extended use under extreme conditions. Castings are coated with a high grade lacquer paint to provide internal and external surface coverage. Paint will gradually wear off and is replaceable; oxidation (surface rusting) is a natural process which does not weaken the material. A zinc anti-corrosion coating is applied to certain castings by sherardizing.

Stainless Steel - Austenitic Grade 304 (Grade 316 optional on most products): Used for bodies, gratings, funnels, access covers, filter buckets and fixings. A corrosion-resistant metal containing significant amounts of nickel and chromium; AISI grade 304 stainless steel is used as standard, which is suitable for general use in and around buildings including most coastal locations. In applications such as swimming pools or having an aggressive atmosphere, grade 316 is recommended and is available optionally (if available, code 'M' will be listed under 'Options'). An even higher grade may be required for applications in highly corrosive environments including where exposure to seawater may be anticipated. Clean with soap and warm water rinse and wipe dry. Gratings may also be cleaned in certain dishwashers. Under no circumstances treat with metal scouring pads, metal scrapers or wire wool as these will contaminate surfaces leaving rust spots. Take care to cover stainless steel items when site work is going on, to avoid contamination with rust-inducing particles such as when mild steel or cast iron items are being cut.

All dimensions are in millimetres unless stated. In line with general practice all dimensions shown are nominal.

Wade International

Third Avenue, Halstead, Essex, CO9 2SX.

Telephone: +44 (0)1787 475151

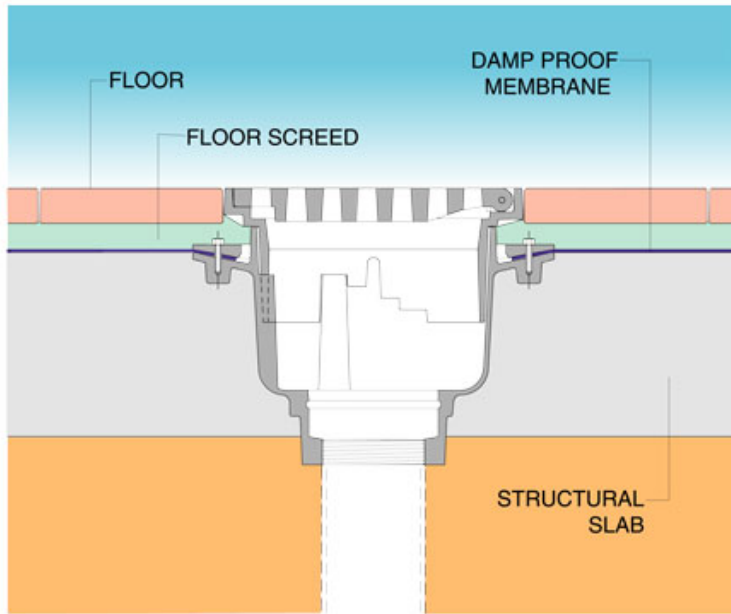
Fax: +44 (0)1787 475579

e-mail: wadetech@alumascwms.co.uk

website: <https://www.alumascwms.co.uk/brands/wade/>

Typical Installation for F216:

Note: This illustration may show a similar Wade Product - it is intended to show the general installation type only.



Dimensioned Section for F216:

