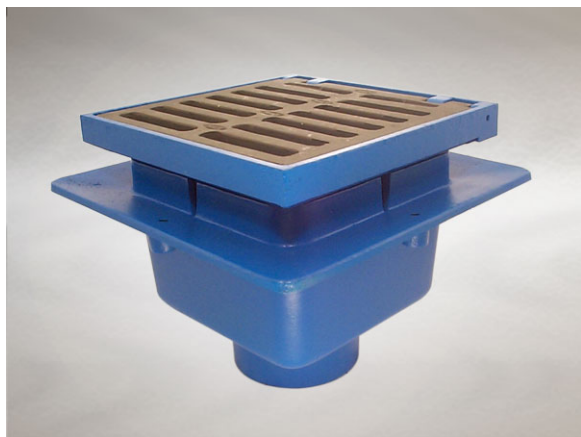


## Product Details

### F204 Non-Trapped Gully Assembly

### Technical Data



#### Dimensions:

325 x 318 at finish level  
396 square body  
232 - Height below Body Flange  
70 to 106 - min/max height between top of grating and body flange

**Connection** - female 4" BSP threaded connection (100mm)

**Free Area** - body= 78cm<sup>2</sup>, grating= 280cm<sup>2</sup>

**Materials** - Body - cast iron, lacquered; Grating - ductile iron, sherardized

**Load Rating Class** - M125

**Weight** - 42.8 kg

#### General Description:

325 x 318 Cast Iron F series Multi-Level Non-Trapped Gully Assembly, for use with unfinished (eg. bare concrete) or paved areas, with 4" BSP dia. vertical outlet. F Series Multi-Level gullies with hinged grating are suited for use in warehouses, plant rooms, yards, car parks etc.

#### Options:

To specify an option, add option letter(s) as a suffix to the Spec. Code

B - silt bucket

C.F2 - membrane clamping collar (order as separate code)

#### Materials:

**Cast Iron - BS EN 1561:** Used for bodies, membrane clamping collars, spigot adaptors and accessories such as extensions. A widely used metal in the drainage industry, its resistance to corrosion permits extended use under extreme conditions. Castings are coated with a high grade lacquer paint to provide internal and external surface coverage. Paint will gradually wear off and is replaceable; oxidation (surface rusting) is a natural process which does not weaken the material. A zinc anti-corrosion coating is applied to certain castings by sherardizing.

**Ductile Iron - BS EN 1563 + 1564:** A casting with the ductility of steel, yet with more than twice the tensile strength of cast iron. A zinc anti-corrosion coating is applied by sherardizing.

All dimensions are in millimetres unless stated. In line with general practice all dimensions shown are nominal.

Wade International

Third Avenue, Halstead, Essex, CO9 2SX.

Telephone: +44 (0)1787 475151

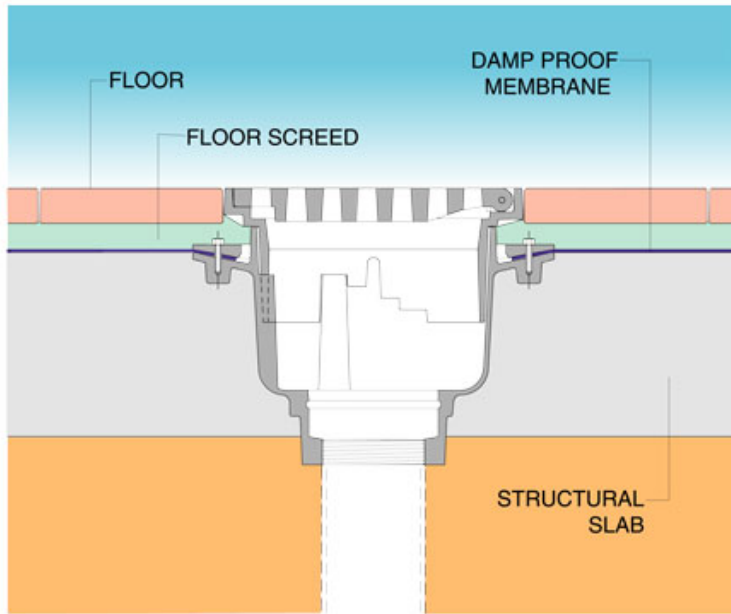
Fax: +44 (0)1787 475579

e-mail: [wadetech@alumascwms.co.uk](mailto:wadetech@alumascwms.co.uk)

website: <https://www.alumascwms.co.uk/brands/wade/>

**Typical Installation for F204:**

Note: This illustration may show a similar Wade Product - it is intended to show the general installation type only.



**Dimensioned Section for F204:**

