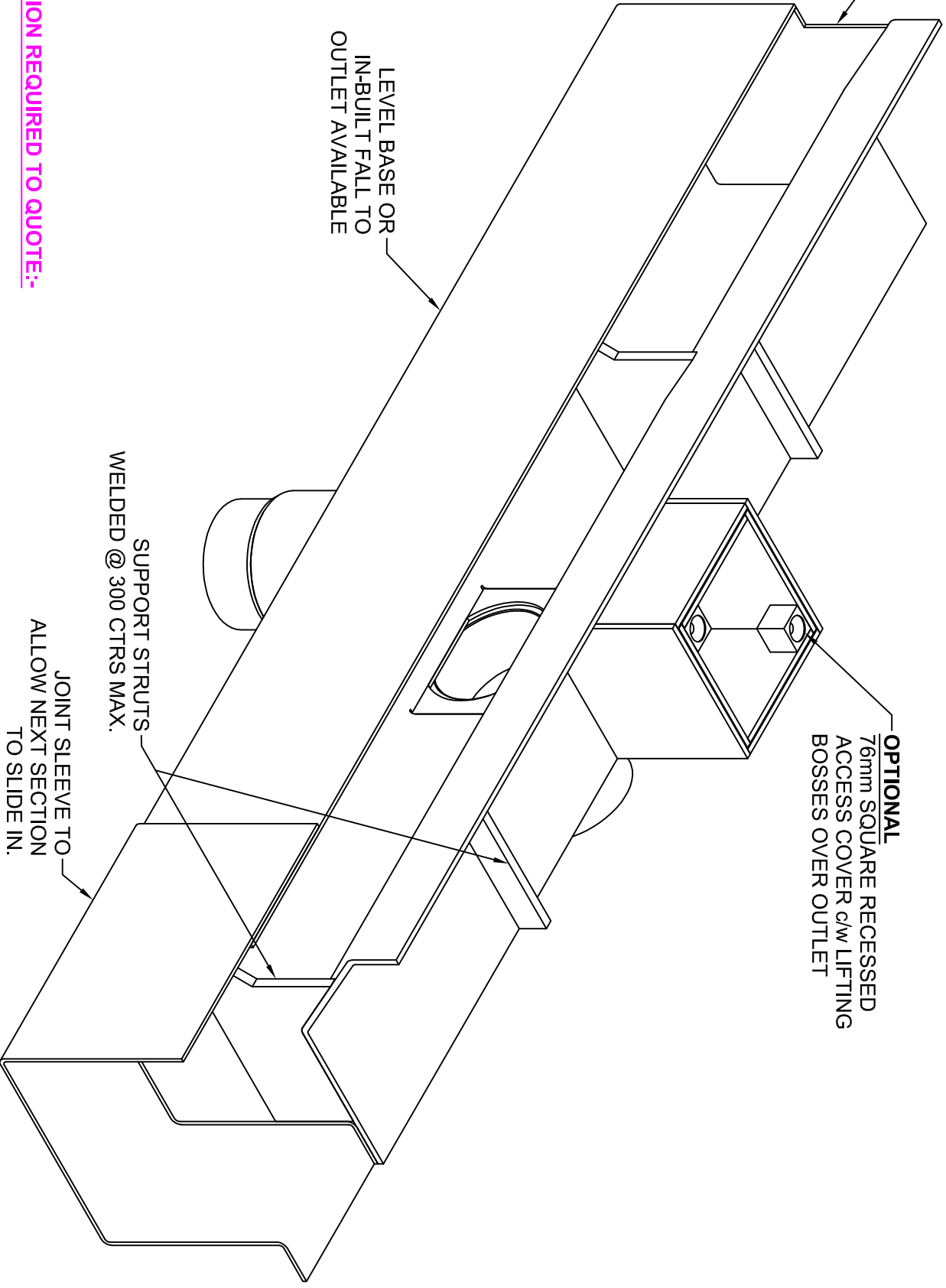


**SECTION THROUGH OUTLET**



**INFORMATION REQUIRED TO QUOTE:-**

1. LENGTH & LAYOUT OF CHANNEL RUNS.
  2. OUTLET QUANTITIES ON EACH RUN.
  3. RECESSED ACCESS COVER QUANTITIES (UNLESS OTHERWISE ADVISED, WE WOULD ASSUME ONE OVER EACH OUTLET).
- INFORMATION REQUIRED TO PROCESS ORDER:-**
4. CHANNEL DEPTHS (SEE SECTION).
  5. OUTLET/RECESSED COVER POSITIONS ALONG EACH RUN.
  6. OUTLET ORIENTATIONS (HORIZONTAL OR VERTICAL).
  7. LEVEL OR IN-BUILT FALLS TO BASE OF CHANNEL.

DO NOT SCALE

THIRD ANGLE PROJECTION

IF IN DOUBT ASK !

© 2015

ISS. No.	2				DRAWN	DC	04/06/2015	TITLE	STAINLESS STEEL TBN THRESHOLD CHANNEL TO SUIT FINELINE ALUMINIUM CILL DETAIL (3mm SHOW FACE)		ISS. No.
C.N. No.	PROFILE REF ADDED				CHECKED				SCALE	DRG. No.	Sheet 1
DATE	8-1-16				APPROVED				NTS	WX510255	Of 1
WADE INTERNATIONAL LTD. THIRD AVENUE, HALSTEAD, ESSEX, CO9 2SX Tel: +44 (0)1787 475151 Fax: +44 (0)1787 475579 e-mail: design@wade.eu web: http://www.wade.eu		 		MATERIAL		STAINLESS STEEL - GRADE 304 (GRADE 316 AVAILABLE AT EXTRA COST)					