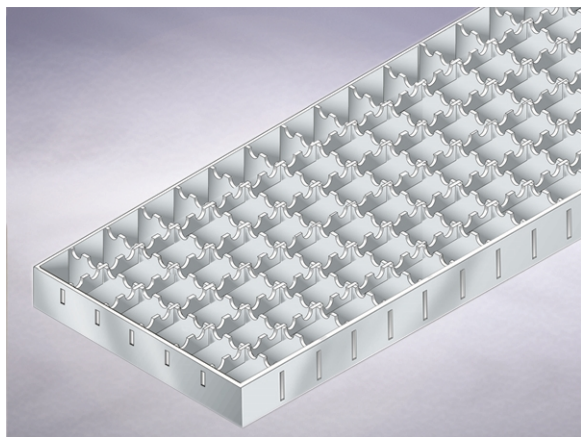


## Product Details

### SS7135A5 Channel Grating

### Technical Data



#### Dimensions:

135 x 500 overall size

23 - grating aperture width

20 - Depth

**Free Area** - 1080 per metre

**Materials** - Stainless steel

**Load Rating Class** - A15

**Weight** - 1.5 kg

#### General Description:

135 wide x 500 long Stainless Steel Anti-Slip Mesh Channel Grating (Slot width reduced to 13mm on long edges) with 23mm grating aperture width. Double notched bars make this grating suited for wet or greasy floors such as at abattoirs and in catering, food processing and pharmaceutical industries. CE marked and type tested to BS EN 1433.

#### Options:

To specify an option, add option letter(s) as a suffix to the Spec. Code

L - secured grating

#### Materials:

**Stainless Steel - Austenitic Grade 304 (Grade 316 optional on most products):** Used for bodies, gratings, funnels, access covers, filter buckets and fixings. A corrosion-resistant metal containing significant amounts of nickel and chromium; AISI grade 304 stainless steel is used as standard, which is suitable for general use in and around buildings including most coastal locations. In applications such as swimming pools or having an aggressive atmosphere, grade 316 is recommended and is available optionally (if available, code 'M' will be listed under 'Options'). An even higher grade may be required for applications in highly corrosive environments including where exposure to seawater may be anticipated. Clean with soap and warm water rinse and wipe dry. Gratings may also be cleaned in certain dishwashers. Under no circumstances treat with metal scouring pads, metal scrapers or wire wool as these will contaminate surfaces leaving rust spots. Take care to cover stainless steel items when site work is going on, to avoid contamination with rust-inducing particles such as when mild steel or cast iron items are being cut.

All dimensions are in millimetres unless stated. In line with general practice all dimensions shown are nominal.

Wade International

Third Avenue, Halstead, Essex, CO9 2SX.

Telephone: +44 (0)1787 475151

Fax: +44 (0)1787 475579

e-mail: [wadetech@alumascwms.co.uk](mailto:wadetech@alumascwms.co.uk)

website: <https://www.alumascwms.co.uk/brands/wade/>