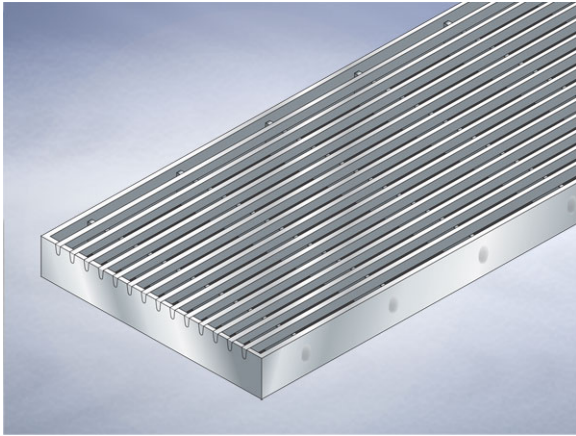


Product Details

SS3150B5 Channel Grating

Technical Data



Dimensions:

150 x 500 overall size
5 - grating aperture width
30 - Depth

Free Area - 825 per metre

Materials - Stainless steel

Load Rating Class - B125

Weight - 2.5 kg

General Description:

150 wide x 500 long Stainless Steel Streamline Channel Grating (Suited for pedestrian and car parking areas) with 5mm grating aperture width . Reverse wedge profile reduces incidence of blocked gratings. CE marked and type tested to BS EN 1433.

Options:

To specify an option, add option letter(s) as a suffix to the Spec. Code

L - secured grating

Materials:

Stainless Steel - Austenitic Grade 304 (Grade 316 optional on most products): Used for bodies, gratings, funnels, access covers, filter buckets and fixings. A corrosion-resistant metal containing significant amounts of nickel and chromium; AISI grade 304 stainless steel is used as standard, which is suitable for general use in and around buildings including most coastal locations. In applications such as swimming pools or having an aggressive atmosphere, grade 316 is recommended and is available optionally (if available, code 'M' will be listed under 'Options'). An even higher grade may be required for applications in highly corrosive environments including where exposure to seawater may be anticipated. Clean with soap and warm water rinse and wipe dry. Gratings may also be cleaned in certain dishwashers. Under no circumstances treat with metal scouring pads, metal scrapers or wire wool as these will contaminate surfaces leaving rust spots. Take care to cover stainless steel items when site work is going on, to avoid contamination with rust-inducing particles such as when mild steel or cast iron items are being cut.

All dimensions are in millimetres unless stated. In line with general practice all dimensions shown are nominal.

Wade International

Third Avenue, Halstead, Essex, CO9 2SX.

Telephone: +44 (0)1787 475151

Fax: +44 (0)1787 475579

e-mail: wadetech@alumascwms.co.uk

website: <https://www.alumascwms.co.uk/brands/wade/>