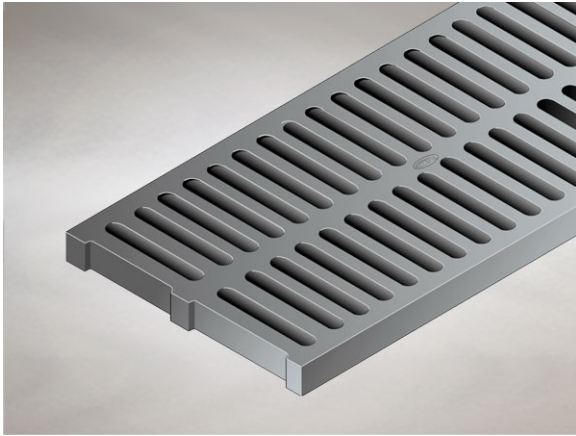


Product Details

SG16460 Channel Grating

Technical Data



Dimensions:

305 x 610 overall size

16 - grating aperture width

26 - Depth

Free Area - 1240 per metre

Materials - Ductile iron, sherardized

Load Rating Class - C250

Weight - 20.7 kg

General Description:

305 wide x 610 long Ductile Iron Standard Slot Channel Grating with 16mm grating aperture width . Robust durable gratings for use in service areas, plant areas etc. and also for restoration or refurbishment projects where there is a requirement to match period architecture. CE marked and type tested to BS EN 1433.

Options:

To specify an option, add option letter(s) as a suffix to the Spec. Code

L - secured grating

Materials:

Ductile Iron - BS EN 1563 + 1564: A casting with the ductility of steel, yet with more than twice the tensile strength of cast iron. A zinc anti-corrosion coating is applied by sherardizing.

All dimensions are in millimetres unless stated. In line with general practice all dimensions shown are nominal.

Wade International

Third Avenue, Halstead, Essex, CO9 2SX.

Telephone: +44 (0)1787 475151

Fax: +44 (0)1787 475579

e-mail: wadetech@alumascwms.co.uk

website: <https://www.alumascwms.co.uk/brands/wade/>