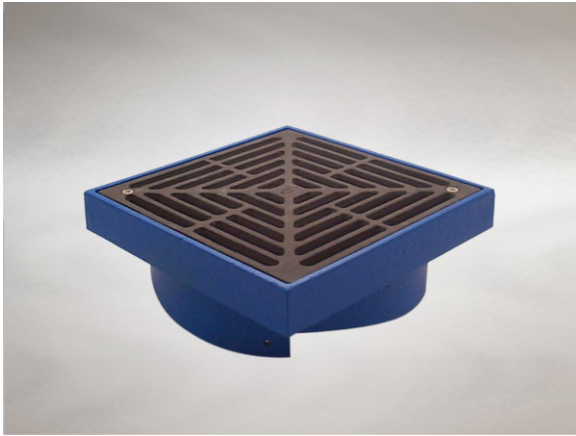


**Product Details**

**M401 Grating**

**Technical Data**



**Dimensions:**

270 square at finish level

96 - Overall Height

61 to 111 - min/max height between membrane level and top of grating

**Connection** - connects to E series bodies

**Free Area** - 300cm<sup>2</sup>

**Materials** - Ductile iron, sherardized

**Load Rating Class** - L15

**Weight** - 5.6 kg

**General Description:**

270 Square Ductile Iron E series Multi-Level Grating, for use with unfinished (eg. bare concrete) or paved areas. E Series Multi-Level gullies are suited for plant rooms, yards, car parks etc.

**Options:**

To specify an option, add option letter(s) as a suffix to the Spec. Code

B - filter bucket

H - fitted with Pin Torx screws for security applications

NB - grating manufactured of nickel bronze (Note - Load rating may be reduced)

**Materials:**

**Ductile Iron - BS EN 1563 + 1564:** A casting with the ductility of steel, yet with more than twice the tensile strength of cast iron. A zinc anti-corrosion coating is applied by sherardizing.

All dimensions are in millimetres unless stated. In line with general practice all dimensions shown are nominal.

Wade International

Third Avenue, Halstead, Essex, CO9 2SX.

Telephone: +44 (0)1787 475151

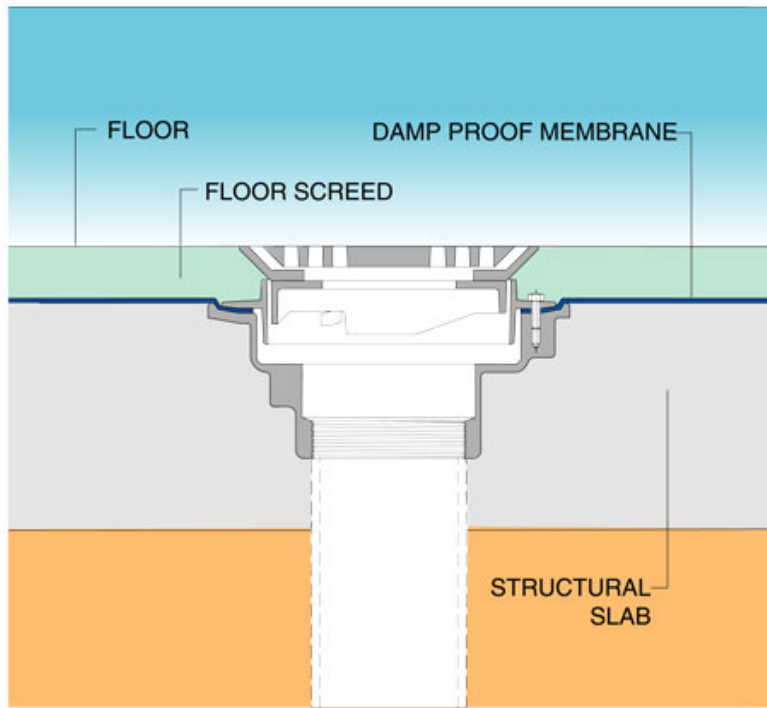
Fax: +44 (0)1787 475579

e-mail: [wadetech@alumascwms.co.uk](mailto:wadetech@alumascwms.co.uk)

website: <https://www.alumascwms.co.uk/brands/wade/>

**Typical Installation for M401:**

Note: This illustration may show a similar Wade Product - it is intended to show the general installation type only.



**Dimensioned Section for M401:**

