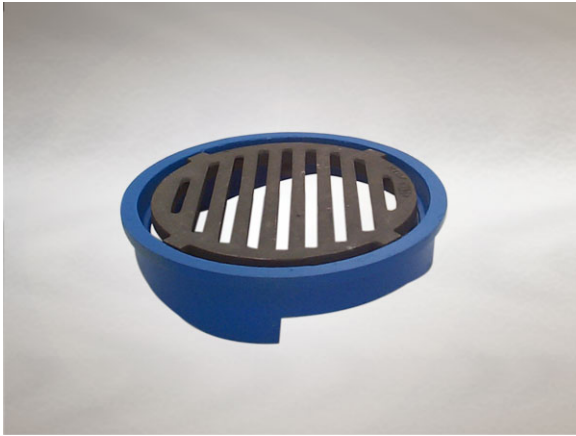


**Product Details**

**M301 Grating**

**Technical Data**



**Dimensions:**

280 dia. at finish level

68 - Overall Height

33 to 83 - min/max height between membrane level and top of grating

**Connection** - connects to E series bodies

**Free Area** - 200cm<sup>2</sup>

**Materials** - Cast iron, sherardized

**Load Rating Class** - L15

**Weight** - 10 kg

**General Description:**

280 Dia. Cast Iron E series Multi-Level Grating, for use with unfinished (eg. Bare concrete) or paved areas. E Series Multi-Level gullies are suited for plant rooms, yards, car parks etc.

**Options:**

To specify an option, add option letter(s) as a suffix to the Spec. Code

B - filter bucket

**Materials:**

**Cast Iron - BS EN 1561:** Used for bodies, membrane clamping collars, spigot adaptors and accessories such as extensions. A widely used metal in the drainage industry, its resistance to corrosion permits extended use under extreme conditions. Castings are coated with a high grade lacquer paint to provide internal and external surface coverage. Paint will gradually wear off and is replaceable; oxidation (surface rusting) is a natural process which does not weaken the material. A zinc anti-corrosion coating is applied to certain castings by sherardizing.

All dimensions are in millimetres unless stated. In line with general practice all dimensions shown are nominal.

Wade International

Third Avenue, Halstead, Essex, CO9 2SX.

Telephone: +44 (0)1787 475151

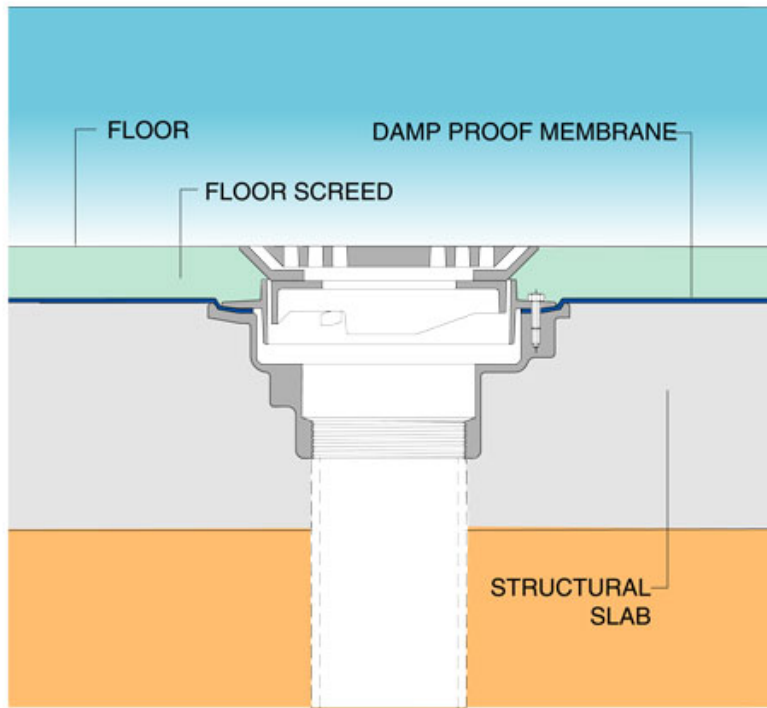
Fax: +44 (0)1787 475579

e-mail: [wadetech@alumascwms.co.uk](mailto:wadetech@alumascwms.co.uk)

website: <https://www.alumascwms.co.uk/brands/wade/>

**Typical Installation for M301:**

Note: This illustration may show a similar Wade Product - it is intended to show the general installation type only.



**Dimensioned Section for M301:**

