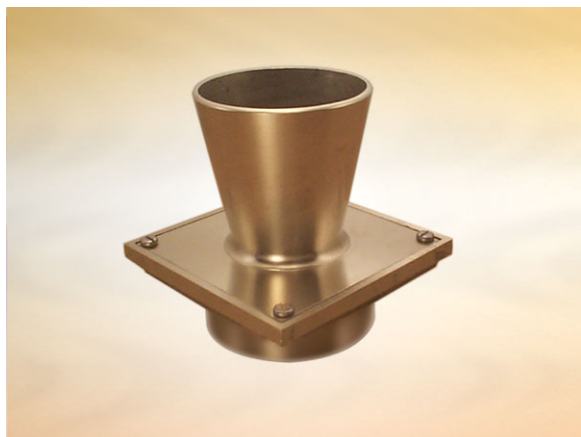


Product Details

L2891 Funnel

Technical Data

**Dimensions:**

150 square at finish level

48 - Frame Height

Connection - 110mm Plastic, 100mm DIN19522 / 4" BS416 / Harmer SML

Free Area - 12cm²

Materials - Nickel bronze

Weight - 3.4 kg

General Description:

150 Square Nickel Bronze Direct Connection Funnel, for use with tiles, marble, terrazzo, resin etc. flooring (To take single indirect waste pipe; with peripheral cover and vermin guard), with 110.2 dia. vertical outlet. Funnel to receive indirect waste pipes, condensate, and discharges from sinks, refrigeration units, boiling pans etc.

Options:

To specify an option, add option letter(s) as a suffix to the Spec. Code

H - fitted with Pin Torx screws for security applications

Materials:

Nickel Bronze - BS EN 1982: Used with satin finish for gratings, funnels and access covers. A cast alloy with a fine grain effect which blends well with most floor finishes. The satin finish is generally maintained by the slight abrasive action of passing traffic. In unused areas the material will gradually tarnish. To restore lustre, apply a plain nylon scouring pad (not soap-filled) in the direction of grain. **Note: Avoid covering nickel bronze items with plastic sheeting after installation, otherwise blackening may occur.**

All dimensions are in millimetres unless stated. In line with general practice all dimensions shown are nominal.

Wade International

Third Avenue, Halstead, Essex, CO9 2SX.

Telephone: +44 (0)1787 475151

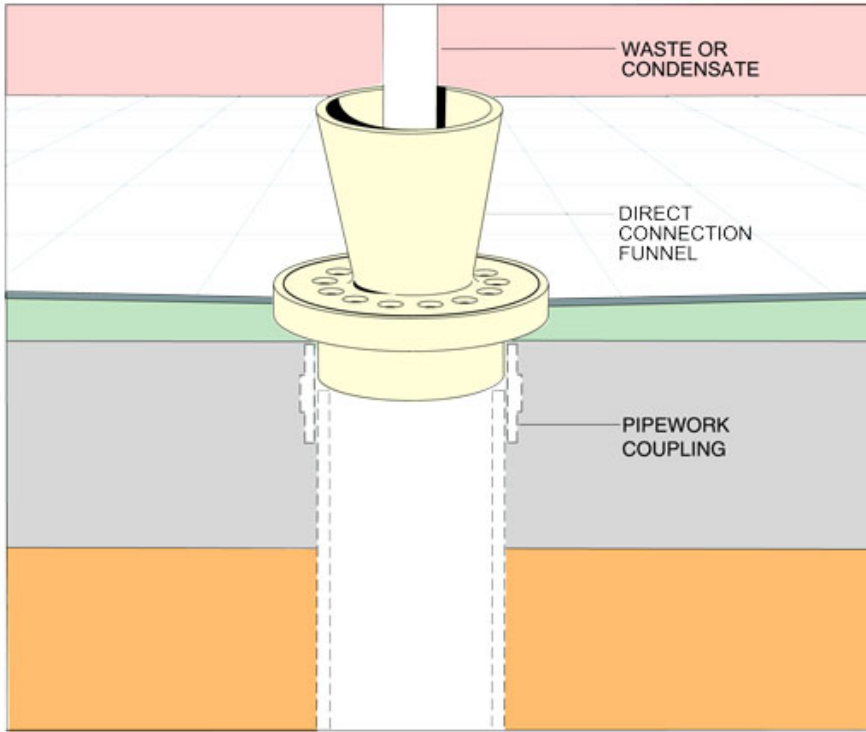
Fax: +44 (0)1787 475579

e-mail: wadetech@alumascwms.co.uk

website: <https://www.alumascwms.co.uk/brands/wade/>

Typical Installation for L2891:

Note: This illustration may show a similar Wade Product - it is intended to show the general installation type only.



Dimensioned Section for L2891:

