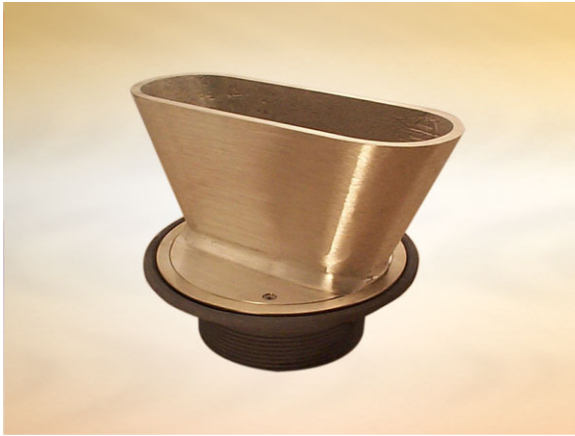


Product Details

K3402 Funnel

Technical Data



Dimensions:

160 dia. at finish level

176 dia. overall size

60 - Frame Height

Connection - 4" NPSM Vari-Level thread

Free Area - 21cm²

Materials - Funnel - nickel bronze; Frame - cast iron, sherardized

Weight - 4.2 kg

General Description:

160 Dia. Nickel Bronze Vari-Level Funnel, for use with flexible sheet floor covering (eg. vinyl) (To take multiple indirect waste pipes; with peripheral cover + vermin guard), with 4" NPSM dia. vertical outlet. Funnel to receive indirect waste pipes, condensate, and discharges from sinks, refrigeration units, boiling pans etc.

Options:

To specify an option, add option letter(s) as a suffix to the Spec. Code

H - fitted with Pin Torx screws for security applications

Materials:

Cast Iron - BS EN 1561: Used for bodies, membrane clamping collars, spigot adaptors and accessories such as extensions. A widely used metal in the drainage industry, its resistance to corrosion permits extended use under extreme conditions. Castings are coated with a high grade lacquer paint to provide internal and external surface coverage. Paint will gradually wear off and is replaceable; oxidation (surface rusting) is a natural process which does not weaken the material. A zinc anti-corrosion coating is applied to certain castings by sherardizing.

Nickel Bronze - BS EN 1982: Used with satin finish for gratings, funnels and access covers. A cast alloy with a fine grain effect which blends well with most floor finishes. The satin finish is generally maintained by the slight abrasive action of passing traffic. In unused areas the material will gradually tarnish. To restore lustre, apply a plain nylon scouring pad (not soap-filled) in the direction of grain. **Note: Avoid covering nickel bronze items with plastic sheeting after installation, otherwise blackening may occur.**

All dimensions are in millimetres unless stated. In line with general practice all dimensions shown are nominal.

Wade International

Third Avenue, Halstead, Essex, CO9 2SX.

Telephone: +44 (0)1787 475151

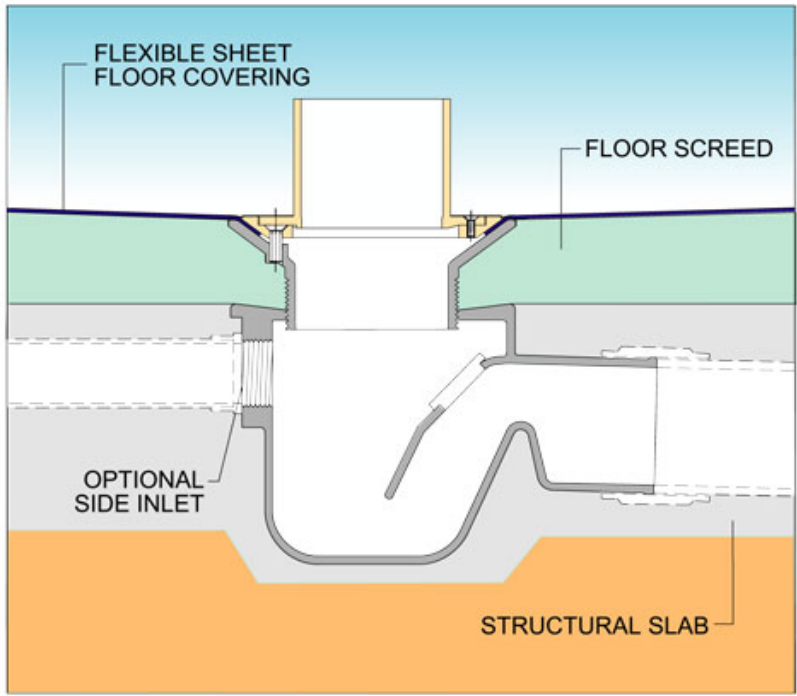
Fax: +44 (0)1787 475579

e-mail: wadetech@alumascwms.co.uk

website: <https://www.alumascwms.co.uk/brands/wade/>

Typical Installation for K3402:

Note: This illustration may show a similar Wade Product - it is intended to show the general installation type only.



Dimensioned Section for K3402:

