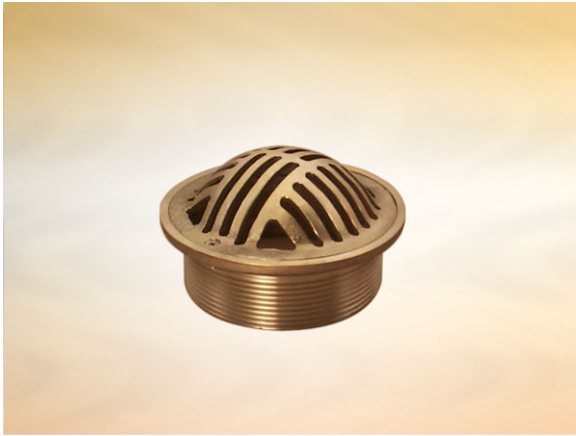


**Product Details**

**K3101 Grating**

**Technical Data**



**Dimensions:**

135 dia. at finish level

48 - Overall Height

**Connection** - 4" NPSM Vari-Level thread

**Free Area** - 45cm<sup>2</sup>

**Materials** - Nickel bronze

**Load Rating Class** - L15

**Weight** - 1 kg

**General Description:**

135 Dia. Nickel Bronze Vari-Level Grating, for use with tiles, marble, terrazzo, resin etc. flooring (Reduces risk of blockages in channels. Removable dome protrudes 30mm), with 4" NPSM dia. vertical outlet. Durable, superbly finished items particularly suited to a high volume of pedestrian traffic.

**Options:**

To specify an option, add option letter(s) as a suffix to the Spec. Code

H - fitted with Pin Torx screws for security applications

**Materials:**

**Nickel Bronze - BS EN 1982:** Used with satin finish for gratings, funnels and access covers. A cast alloy with a fine grain effect which blends well with most floor finishes. The satin finish is generally maintained by the slight abrasive action of passing traffic. In unused areas the material will gradually tarnish. To restore lustre, apply a plain nylon scouring pad (not soap-filled) in the direction of grain. **Note: Avoid covering nickel bronze items with plastic sheeting after installation, otherwise blackening may occur.**

All dimensions are in millimetres unless stated. In line with general practice all dimensions shown are nominal.

Wade International

Third Avenue, Halstead, Essex, CO9 2SX.

Telephone: +44 (0)1787 475151

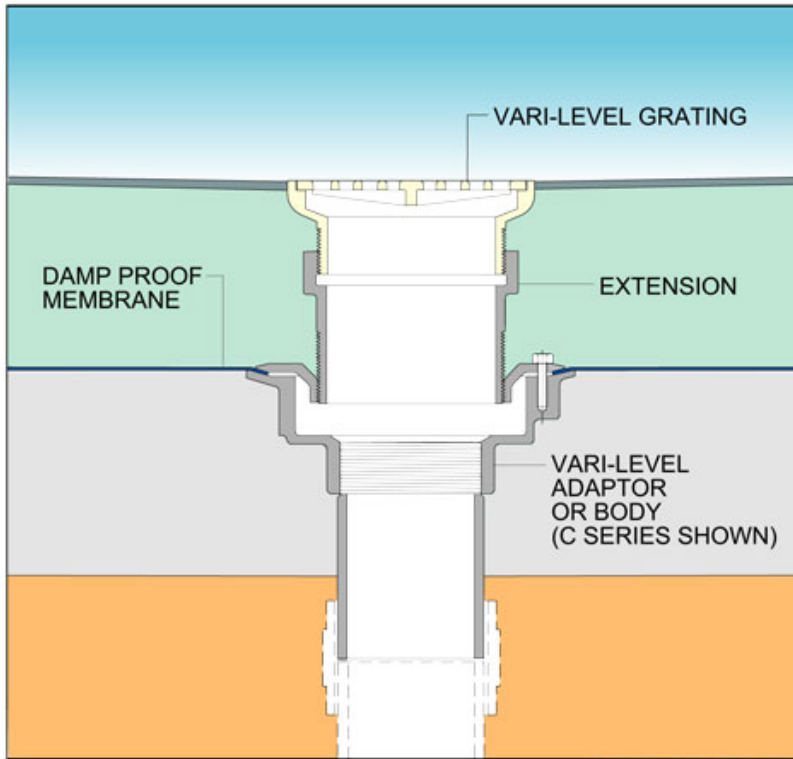
Fax: +44 (0)1787 475579

e-mail: [wadetech@alumascwms.co.uk](mailto:wadetech@alumascwms.co.uk)

website: <https://www.alumascwms.co.uk/brands/wade/>

**Typical Installation for K3101:**

Note: This illustration may show a similar Wade Product - it is intended to show the general installation type only.



**Dimensioned Section for K3101:**

