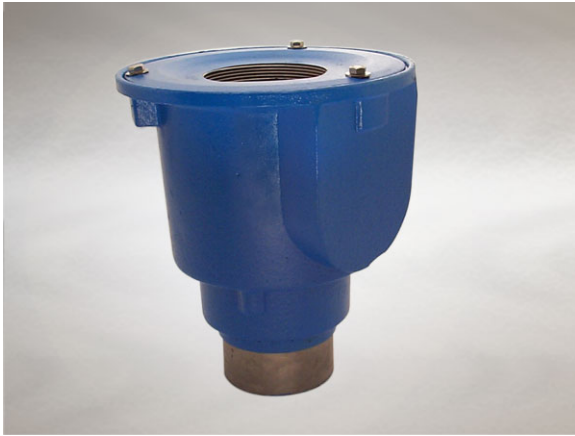


Product Details

GD144 Bell Trapped Body

Technical Data

**Dimensions:**

265 dia. body

304 - Height below Body Flange

-30 to 10 - add to overall grating/cover height for min/max height between body flange and FFL

Connection - 110mm Plastic, 100mm DIN19522 / 4" BS416 / Harmer SML

Free Area - 78cm²

Materials - Cast iron, lacquered

Weight - 17.3 kg

Note: Membrane clamping collar C.D also required if using with a Vari-Level top (C.M1 with Multi-Level). (priced separately from body)

General Description:

Cast Iron GD series Vari-Level Bell Trapped Body (with Optional Side Inlets), with 110.2 dia. vertical outlet. GD Series Vari-Level bell-trapped gullies with 50mm seal, enable full bore access to pipework.

Options:

To specify an option, add option letter(s) as a suffix to the Spec. Code

W - weepholes (provide supplementary drainage at membrane level) - add suffix "W" to membrane clamping collar spec. code

Materials:

Cast Iron - BS EN 1561: Used for bodies, membrane clamping collars, spigot adaptors and accessories such as extensions. A widely used metal in the drainage industry, its resistance to corrosion permits extended use under extreme conditions. Castings are coated with a high grade lacquer paint to provide internal and external surface coverage. Paint will gradually wear off and is replaceable; oxidation (surface rusting) is a natural process which does not weaken the material. A zinc anti-corrosion coating is applied to certain castings by sherardizing.

All dimensions are in millimetres unless stated. In line with general practice all dimensions shown are nominal.

Wade International

Third Avenue, Halstead, Essex, CO9 2SX.

Telephone: +44 (0)1787 475151

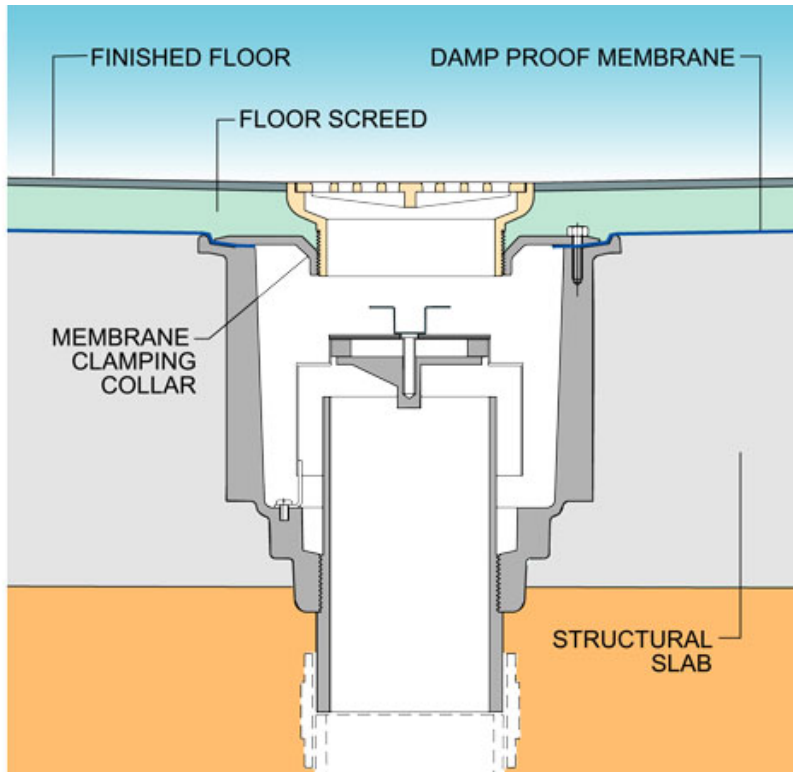
Fax: +44 (0)1787 475579

e-mail: wadetech@alumascwms.co.uk

website: <https://www.alumascwms.co.uk/brands/wade/>

Typical Installation for GD144:

Note: This illustration may show a similar Wade Product - it is intended to show the general installation type only.



Dimensioned Section for GD144:

