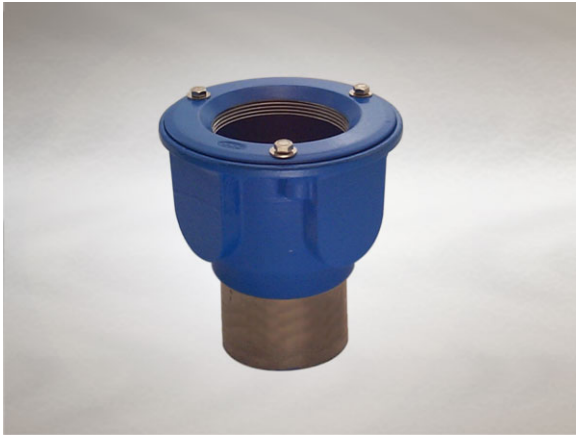


Product Details

GC144 Trapped Body

Technical Data



Dimensions:

200 dia. body
280 - Height below Body Flange
-30 to 10 - add to overall grating/cover height for min/max height between body flange and FFL

Connection - 110mm Plastic, 100mm DIN19522 / 4" BS416 / Harmer SML

Free Area - 20cm²

Materials - Cast iron, lacquered

Weight - 11.1 kg

Note: Membrane clamping collar C.C also required if using with a Vari-Level top. (priced separately from body)

General Description:

Cast Iron GC series Vari-Level Trapped Body (Deep Sump plus Optional Side Inlets with Removable Bottle Trap), with 110.2 dia. vertical outlet. GC Series trapped Vari-Level gullies are suited for low volume drainage applications requiring a trapped outlet with side inlets.

Options:

To specify an option, add option letter(s) as a suffix to the Spec. Code

W - weepholes (provide supplementary drainage at membrane level) - add suffix "W" to membrane clamping collar spec. code

Materials:

Cast Iron - BS EN 1561: Used for bodies, membrane clamping collars, spigot adaptors and accessories such as extensions. A widely used metal in the drainage industry, its resistance to corrosion permits extended use under extreme conditions. Castings are coated with a high grade lacquer paint to provide internal and external surface coverage. Paint will gradually wear off and is replaceable; oxidation (surface rusting) is a natural process which does not weaken the material. A zinc anti-corrosion coating is applied to certain castings by sherardizing.

All dimensions are in millimetres unless stated. In line with general practice all dimensions shown are nominal.

Wade International

Third Avenue, Halstead, Essex, CO9 2SX.

Telephone: +44 (0)1787 475151

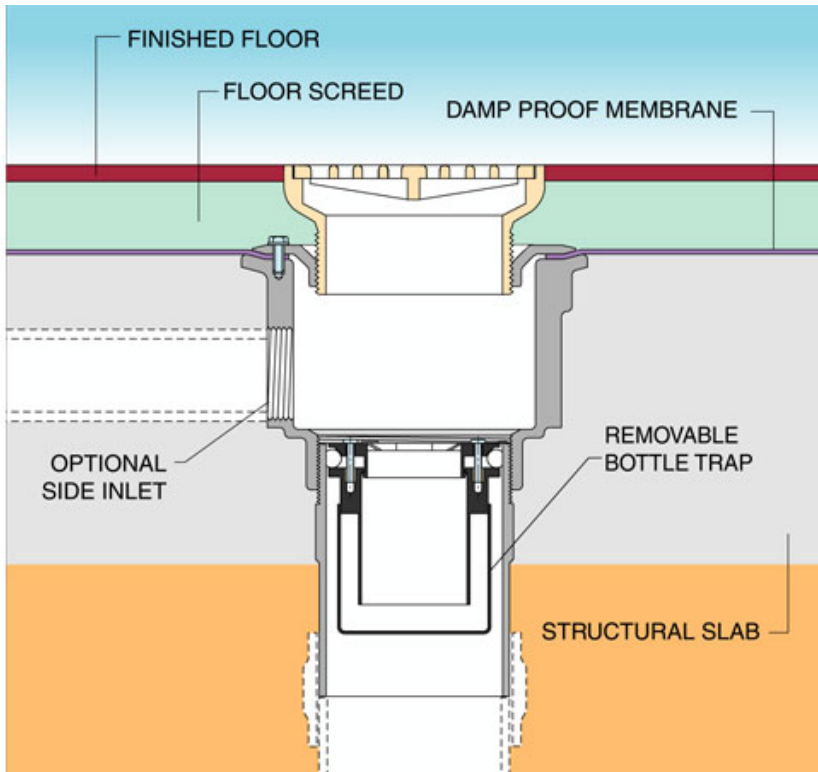
Fax: +44 (0)1787 475579

e-mail: wadetech@alumascwms.co.uk

website: <https://www.alumascwms.co.uk/brands/wade/>

Typical Installation for GC144:

Note: This illustration may show a similar Wade Product - it is intended to show the general installation type only.



Dimensioned Section for GC144:

