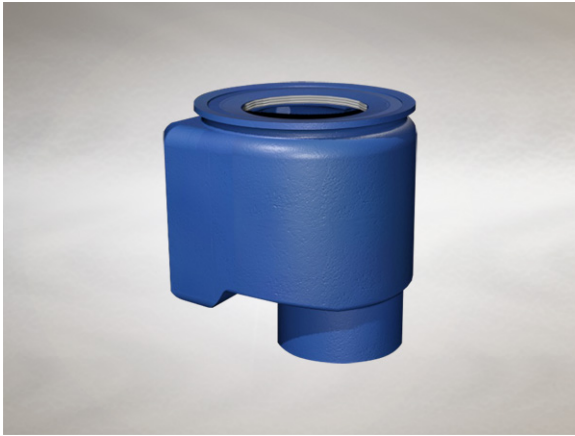


Product Details

G1014 'S' Trapped Body

Technical Data



Dimensions:

188 x 190 body

205 - Height below Body Flange

-30 to -10 - add to overall grating/cover height for min/max height between body flange and FFL

Connection - 4" BS416, 100mm DIN19522 / Harmer SML

Free Area - 64cm²

Materials - Cast iron, lacquered

Weight - 9 kg

General Description:

Cast Iron G series Vari-Level 'S' Trapped Body (with Optional Side Inlets), with 111 dia. vertical outlet. G series Vari-Level trapped gullies with 50mm water seal, are versatile and compact, suitable for finished floor areas where limited space is available for a gully.

Options:

To specify an option, add option letter(s) as a suffix to the Spec. Code

C - membrane clamping collar

Materials:

Cast Iron - BS EN 1561: Used for bodies, membrane clamping collars, spigot adaptors and accessories such as extensions. A widely used metal in the drainage industry, its resistance to corrosion permits extended use under extreme conditions. Castings are coated with a high grade lacquer paint to provide internal and external surface coverage. Paint will gradually wear off and is replaceable; oxidation (surface rusting) is a natural process which does not weaken the material. A zinc anti-corrosion coating is applied to certain castings by sherardizing.

All dimensions are in millimetres unless stated. In line with general practice all dimensions shown are nominal.

Wade International

Third Avenue, Halstead, Essex, CO9 2SX.

Telephone: +44 (0)1787 475151

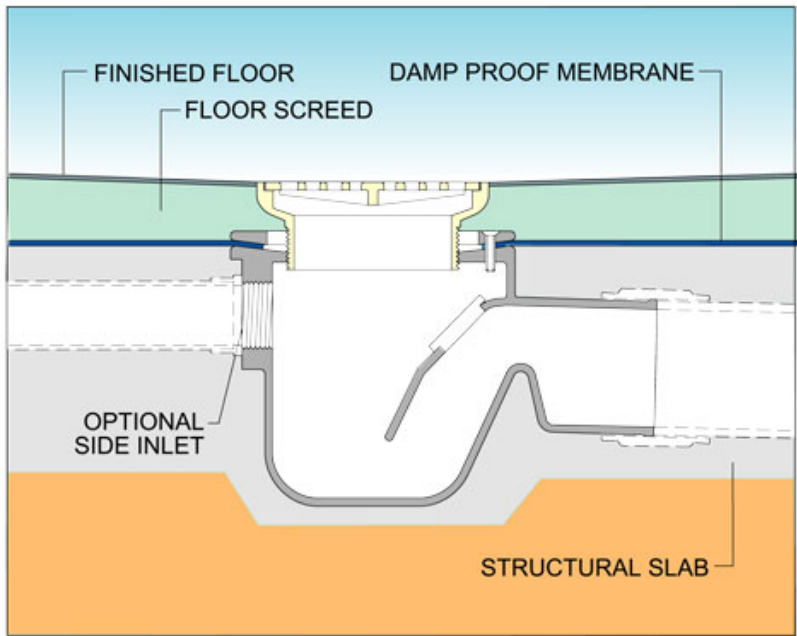
Fax: +44 (0)1787 475579

e-mail: wadetech@alumascwms.co.uk

website: <https://www.alumascwms.co.uk/brands/wade/>

Typical Installation for G1014:

Note: This illustration may show a similar Wade Product - it is intended to show the general installation type only.



Dimensioned Section for G1014:

