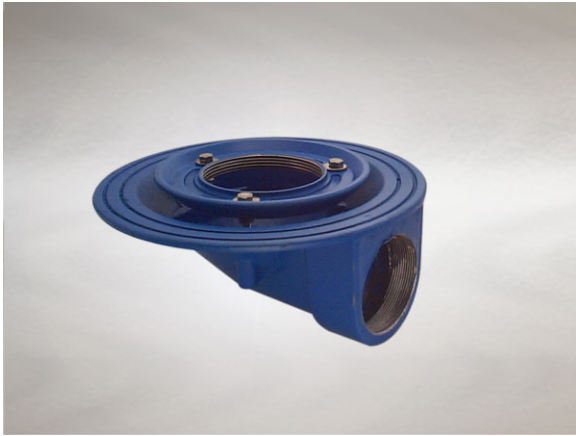


Product Details

D1208 Non-Trapped Body for use with Bituminous Membrane Technical Data



Dimensions:

305 dia. body

119 - Height below Body Flange

-20 to 0 - add to overall grating/cover height for min/max height between body flange and FFL

68 - depth body flange to outlet center line

Connection - female 3" BSP threaded connection (75mm)

Free Area - 44cm²

Materials - Cast iron, lacquered

Weight - 6.7 kg

Note: Membrane clamping collar C.D10 also required if using with a Vari-Level top. (priced separately from body)

General Description:

Cast Iron D10 - D12 series Vari-Level Non-Trapped Body for use with Bituminous Membrane (Horizontal Threaded Outlet), with 3" BSP dia. horizontal outlet. D10 - 12 Series Vari-Level gullies have a wide flange to enable effective clamping of a bituminous damp-proof membrane, or asphalt / composition flooring. NOTE: Height adjustability dimensions are based on clamping 20mm membrane thickness.

Options:

To specify an option, add option letter(s) as a suffix to the Spec. Code

W - weepholes (provide supplementary drainage at membrane level) - add suffix "W" to membrane clamping collar spec. code

Materials:

Cast Iron - BS EN 1561: Used for bodies, membrane clamping collars, spigot adaptors and accessories such as extensions. A widely used metal in the drainage industry, its resistance to corrosion permits extended use under extreme conditions. Castings are coated with a high grade lacquer paint to provide internal and external surface coverage. Paint will gradually wear off and is replaceable; oxidation (surface rusting) is a natural process which does not weaken the material. A zinc anti-corrosion coating is applied to certain castings by sherardizing.

All dimensions are in millimetres unless stated. In line with general practice all dimensions shown are nominal.

Wade International

Third Avenue, Halstead, Essex, CO9 2SX.

Telephone: +44 (0)1787 475151

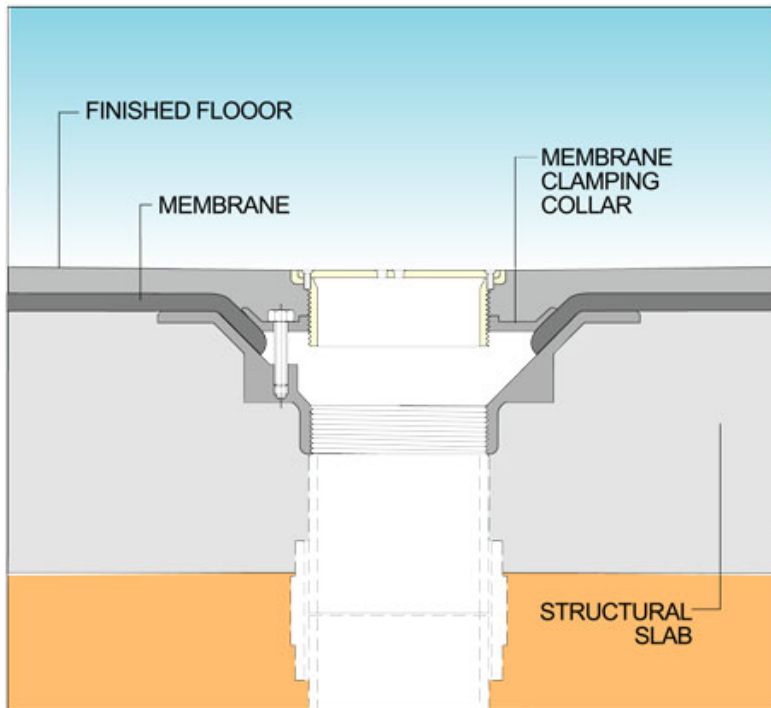
Fax: +44 (0)1787 475579

e-mail: wadetech@alumascwms.co.uk

website: <https://www.alumascwms.co.uk/brands/wade/>

Typical Installation for D1208:

Note: This illustration may show a similar Wade Product - it is intended to show the general installation type only.



Dimensioned Section for D1208:

