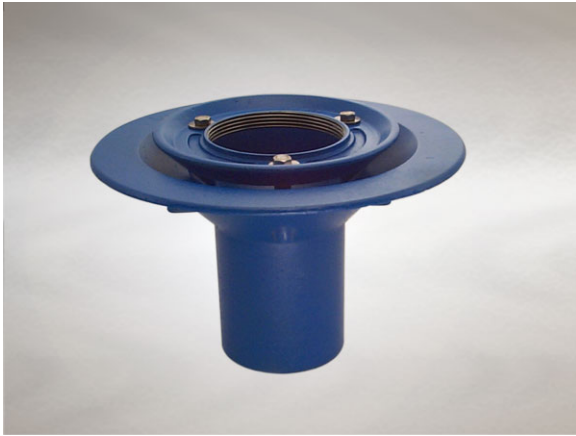


## Product Details

### D1109 Non-Trapped Body for use with Bituminous Membrane Technical Data

**Dimensions:**

305 dia. body

190 - Height below Body Flange

-20 to 0 - add to overall grating/cover height for min/max height between body flange and FFL

**Connection** - 4" BS416, 100mm DIN19522 / Harmer SML

**Free Area** - 78cm<sup>2</sup>

**Materials** - Cast iron, lacquered

**Weight** - 4.6 kg

**Note:** Membrane clamping collar C.D10 also required if using with a Vari-Level top. (priced separately from body)

**General Description:**

Cast Iron D10 - D12 series Vari-Level Non-Trapped Body for use with Bituminous Membrane, with 111 dia. vertical outlet. D10 - 12 Series Vari-Level gullies have a wide flange to enable effective clamping of a bituminous damp-proof membrane, or asphalt / composition flooring. NOTE: Height adjustability dimensions are based on clamping 20mm membrane thickness.

**Options:**

To specify an option, add option letter(s) as a suffix to the Spec. Code

W - weepholes (provide supplementary drainage at membrane level) - add suffix "W" to membrane clamping collar spec. code

**Materials:**

**Cast Iron - BS EN 1561:** Used for bodies, membrane clamping collars, spigot adaptors and accessories such as extensions. A widely used metal in the drainage industry, its resistance to corrosion permits extended use under extreme conditions. Castings are coated with a high grade lacquer paint to provide internal and external surface coverage. Paint will gradually wear off and is replaceable; oxidation (surface rusting) is a natural process which does not weaken the material. A zinc anti-corrosion coating is applied to certain castings by sherardizing.

---

All dimensions are in millimetres unless stated. In line with general practice all dimensions shown are nominal.

Wade International

Third Avenue, Halstead, Essex, CO9 2SX.

Telephone: +44 (0)1787 475151

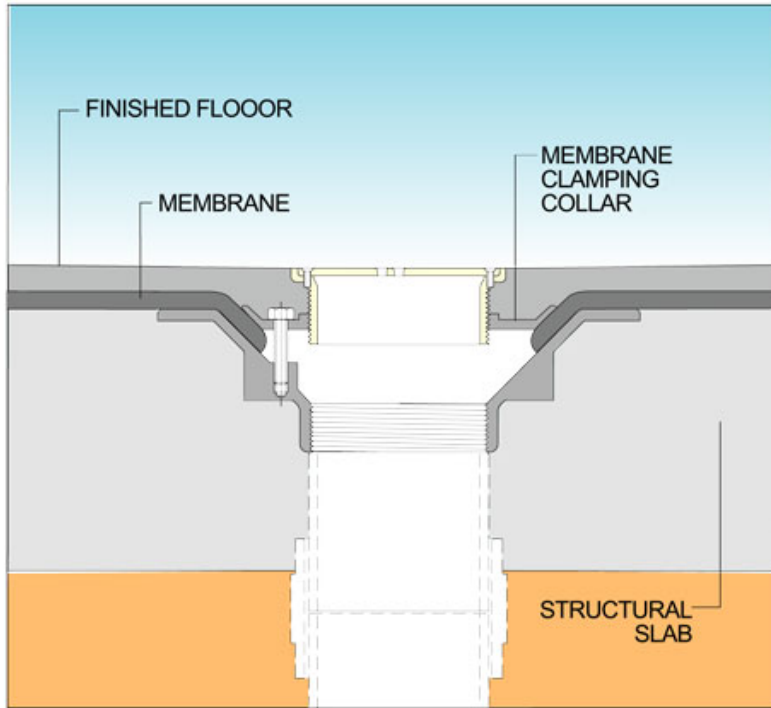
Fax: +44 (0)1787 475579

e-mail: [wadetech@alumascwms.co.uk](mailto:wadetech@alumascwms.co.uk)

website: <https://www.alumascwms.co.uk/brands/wade/>

**Typical Installation for D1109:**

Note: This illustration may show a similar Wade Product - it is intended to show the general installation type only.



**Dimensioned Section for D1109:**

