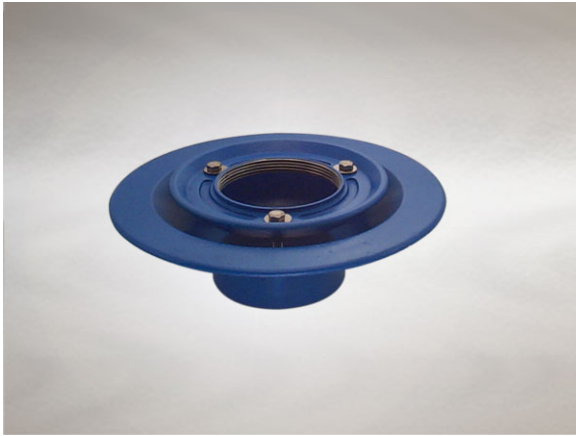


**Product Details**

**D1003 Non-Trapped Body for use with Bituminous Membrane Technical Data**



**Dimensions:**

305 dia. body

90 - Height below Body Flange

-20 to 0 - add to overall grating/cover height for min/max height between body flange and FFL

**Connection** - female 3" BSP threaded connection (75mm)

**Free Area** - 44cm<sup>2</sup>

**Materials** - Cast iron, lacquered

**Weight** - 4.3 kg

**Note:** Membrane clamping collar C.D10 also required if using with a Vari-Level top. (priced separately from body)

**General Description:**

Cast Iron D10 - D12 series Vari-Level Non-Trapped Body for use with Bituminous Membrane, with 3" BSP dia. vertical outlet. D10 - 12 Series Vari-Level gullies have a wide flange to enable effective clamping of a bituminous damp-proof membrane, or asphalt / composition flooring. NOTE: Height adjustability dimensions are based on clamping 20mm membrane thickness.

**Options:**

To specify an option, add option letter(s) as a suffix to the Spec. Code

W - weepholes (provide supplementary drainage at membrane level) - add suffix "W" to membrane clamping collar spec. code

**Materials:**

**Cast Iron - BS EN 1561:** Used for bodies, membrane clamping collars, spigot adaptors and accessories such as extensions. A widely used metal in the drainage industry, its resistance to corrosion permits extended use under extreme conditions. Castings are coated with a high grade lacquer paint to provide internal and external surface coverage. Paint will gradually wear off and is replaceable; oxidation (surface rusting) is a natural process which does not weaken the material. A zinc anti-corrosion coating is applied to certain castings by sherardizing.

All dimensions are in millimetres unless stated. In line with general practice all dimensions shown are nominal.

Wade International

Third Avenue, Halstead, Essex, CO9 2SX.

Telephone: +44 (0)1787 475151

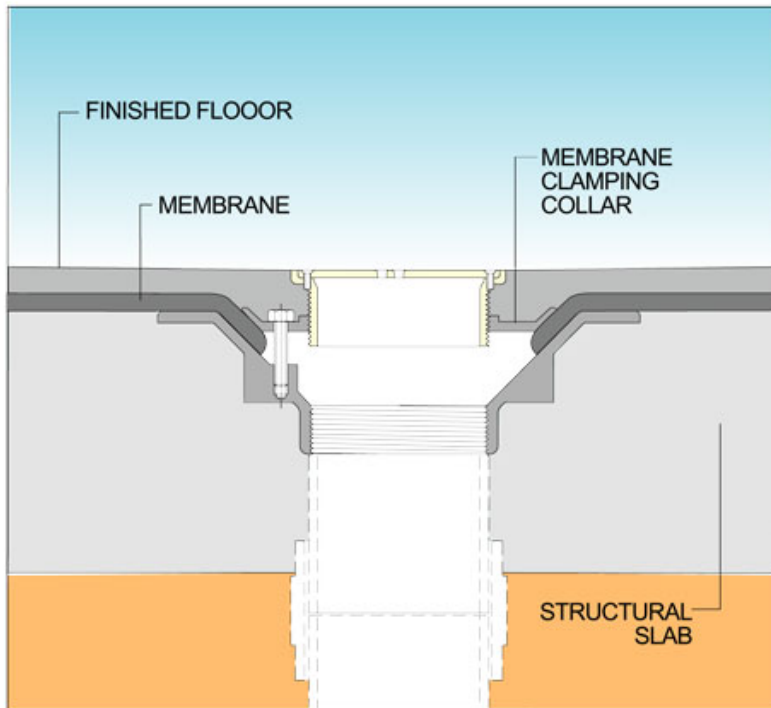
Fax: +44 (0)1787 475579

e-mail: wadetech@alumascwms.co.uk

website: <https://www.alumascwms.co.uk/brands/wade/>

**Typical Installation for D1003:**

Note: This illustration may show a similar Wade Product - it is intended to show the general installation type only.



**Dimensioned Section for D1003:**

