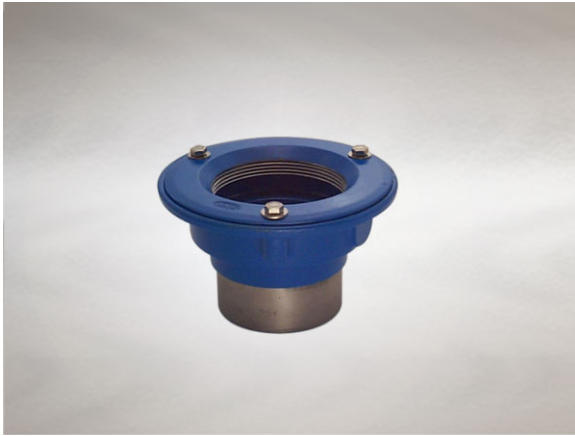


## Product Details

### C344 Non-Trapped Body

### Technical Data

**Dimensions:**

200 dia. body

115 - Height below Body Flange

-30 to 10 - add to overall grating/cover height for min/max height between body flange and FFL

**Connection** - 110mm Plastic, 100mm DIN19522 / 4" BS416 / Harmer SML

**Free Area** - 78cm<sup>2</sup>

**Materials** - Cast iron, lacquered

**Weight** - 3.3 kg

**Note:** Membrane clamping collar C.C3 or C.C also required if using with a Vari-Level top. (priced separately from body)

**General Description:**

Cast Iron C series Vari-Level Non-Trapped Body (Shallow Sump), with 110.2 dia. vertical outlet. C Series Vari-Level gullies are suited for a wide range of applications.

**Options:**

To specify an option, add option letter(s) as a suffix to the Spec. Code

W - weepholes (provide supplementary drainage at membrane level) - add suffix "W" to membrane clamping collar spec. code

**Materials:**

**Cast Iron - BS EN 1561:** Used for bodies, membrane clamping collars, spigot adaptors and accessories such as extensions. A widely used metal in the drainage industry, its resistance to corrosion permits extended use under extreme conditions. Castings are coated with a high grade lacquer paint to provide internal and external surface coverage. Paint will gradually wear off and is replaceable; oxidation (surface rusting) is a natural process which does not weaken the material. A zinc anti-corrosion coating is applied to certain castings by sherardizing.

All dimensions are in millimetres unless stated. In line with general practice all dimensions shown are nominal.

Wade International

Third Avenue, Halstead, Essex, CO9 2SX.

Telephone: +44 (0)1787 475151

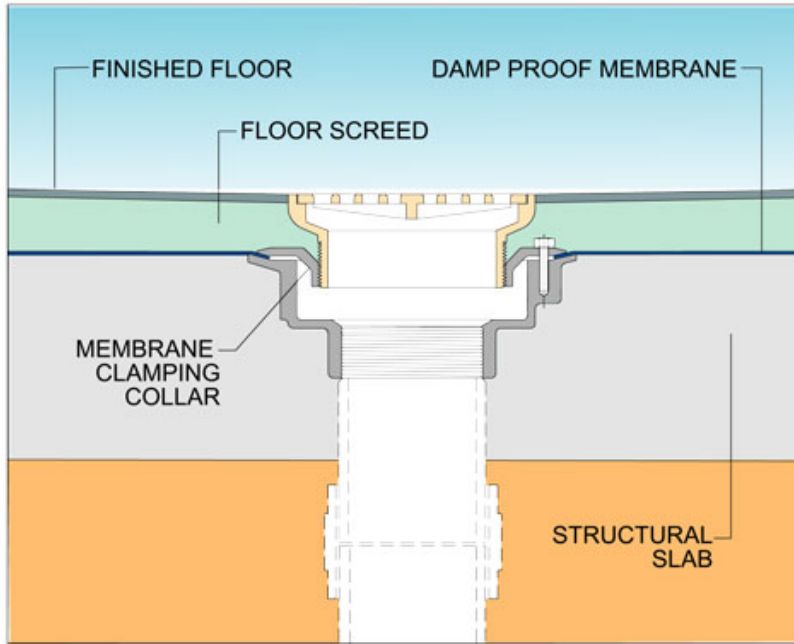
Fax: +44 (0)1787 475579

e-mail: [wadetech@alumascwms.co.uk](mailto:wadetech@alumascwms.co.uk)

website: <https://www.alumascwms.co.uk/brands/wade/>

**Typical Installation for C344:**

Note: This illustration may show a similar Wade Product - it is intended to show the general installation type only.



**Dimensioned Section for C344:**

