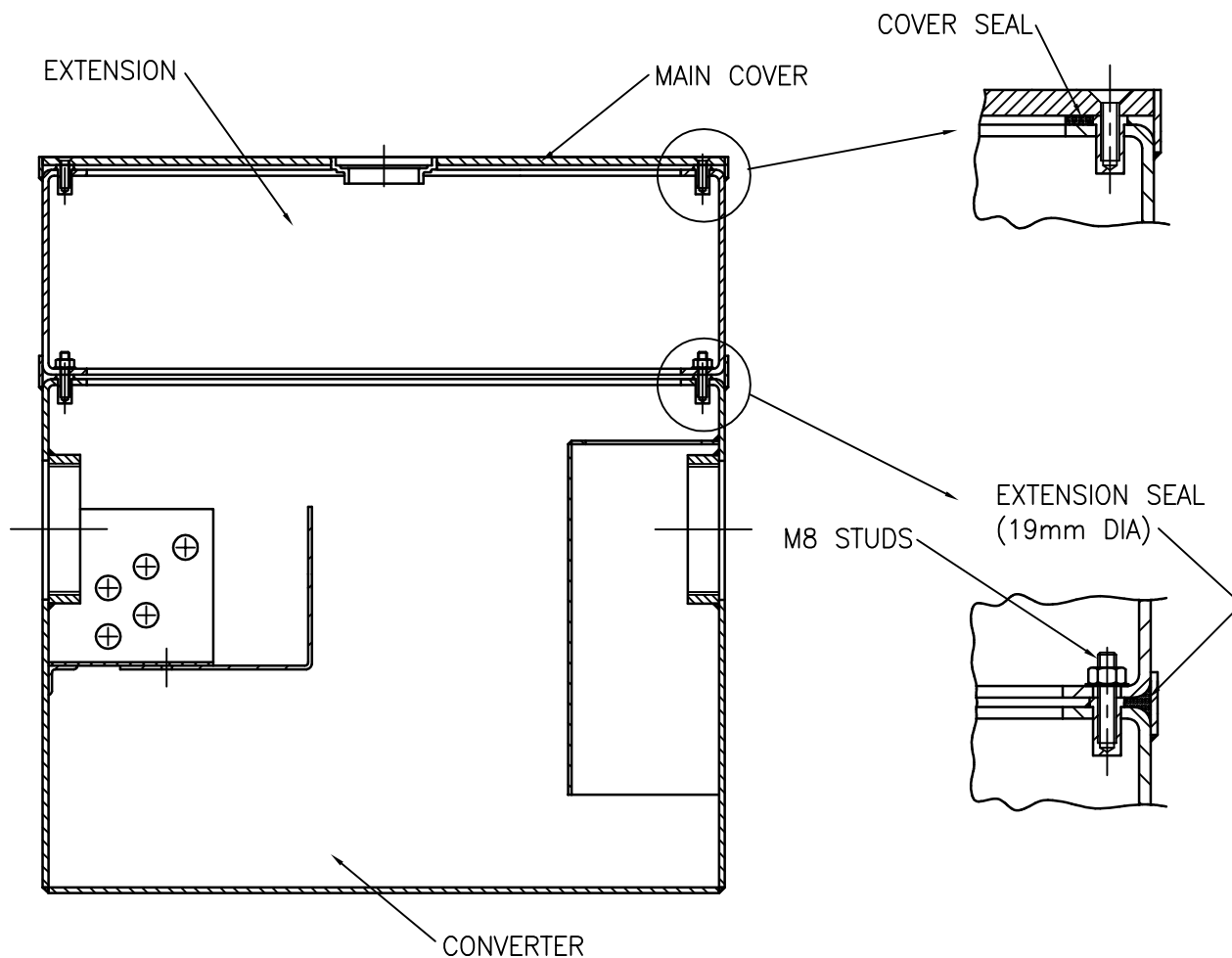



ACTIMATIC GREASE CONVERTER - EXTENSION FITTING INSTRUCTIONS
(APPLICABLE ONLY WHEN EXTENSION IS SUPPLIED SEPARATELY)



1. Remove the main cover and the seal from existing converter. The seal removed may be discarded. The screws must be retained for securing the cover to the extension.
2. Fit the M8 studs (supplied) into the bushes around the upper flange of the converter.
3. Fit the 19mm dia. seal (supplied) around the converter flange, ensuring that the seal is outside the studs.
4. Position the extension over the studs and secure it using the M8 nuts and washers supplied.
5. Fit the new cover seal (supplied) around the upper flange of the extension.
6. Fit the cover to the extension and secure using the countersunk screws removed at step 1.

© 2001

ISS. No.	4		DRAWN	DC	19-10-01	TITLE ACTIMATIC GREASE CONVERTER EXTENSION FITTING INSTRUCTIONS		
C.N. No.	2896		CHECKED					
DATE	19-10-01		APPRVD.					
		50910040				SCALE NTS	DRG. No. INSTAL 4	ISSUE No. 4