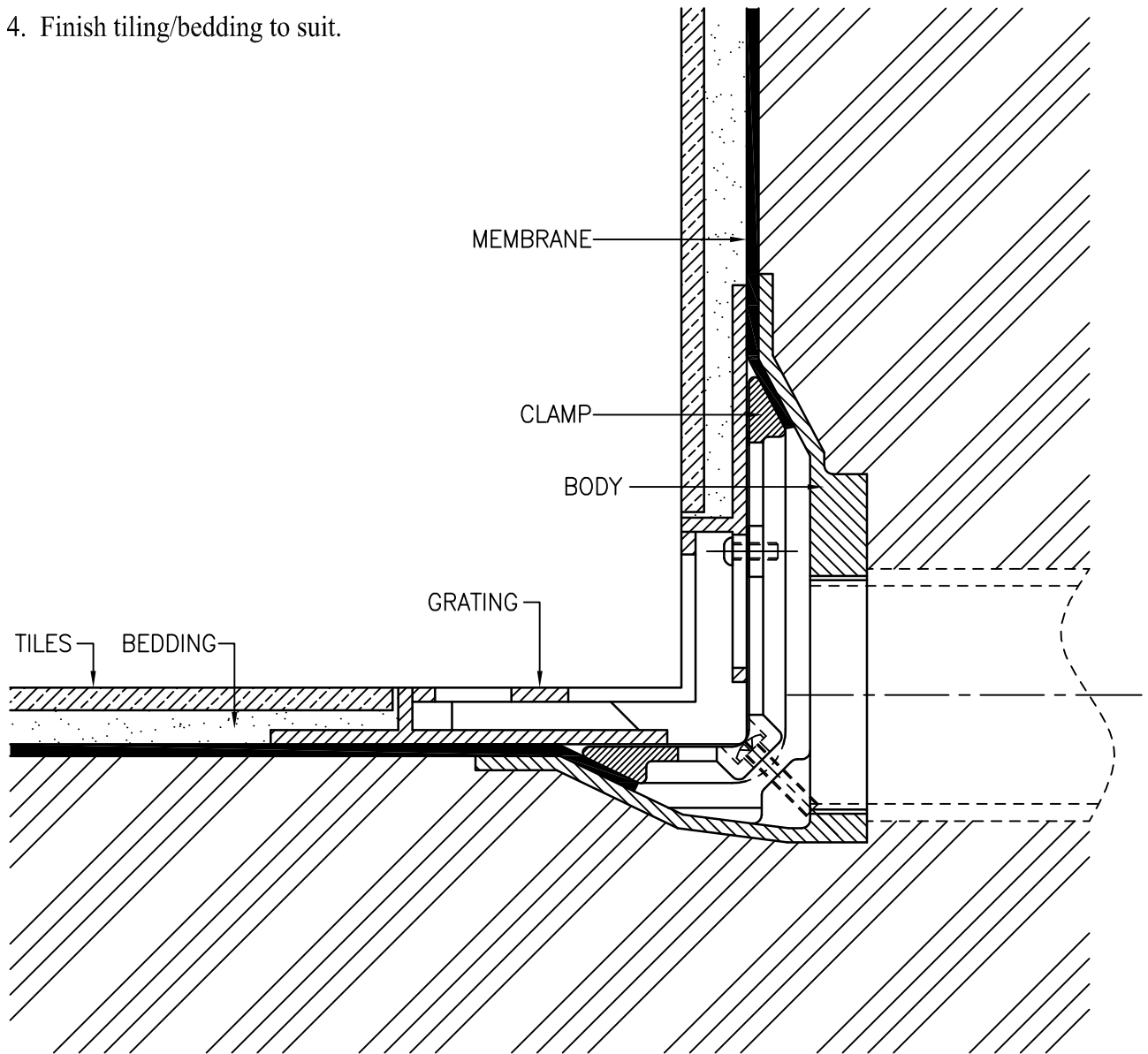



Installation Instructions

1. Fit body into structure & connect pipework.
2. Dress and seal membrane over the body flange and into the body.
Clamp using frame provided. note that for very thin and/or relatively hard membranes it may be necessary to use additional sealant to effect a seal.(If no membrane is used, then it is essential that the grating assembly is sealed onto the body to ensure a waterproof installation).
3. Fit grating assembly onto clamp frame using screws provided.
4. Finish tiling/bedding to suit.



© 2007

ISS. No.		DRAWN	DC	7-6-07	TITLE GENERAL INSTALLATION DETAIL FOR P1412 - P1414 SHOWER GULLY		
C.N. No.		CHECKED					
DATE		APPRVD.					
	Part Number		50910038		SCALE	DRG. No.	ISSUE No. 1
					NTS	INSTAL 38	

WADE INTERNATIONAL LTD., THIRD AVENUE, HALSTEAD, ESSEX, CO9 2SX.

TEL: 01787 475151 FAX: 01787 475579

e-mail: tech@wade.eu website: www.wade.eu